

POLYGON

OWNER MANUAL





COLLOSUS T[®]



COLLOSUS TE0 AXS



COLLOSUS TE8 AXS

CONGRATULATIONS!

Congratulations for buying Polygon Bikes! A bicycle is a great tool for transportation and recreation. Hopefully, you can find enjoyment and have a great deal of use in every ride. This manual contains important information which includes safety, performance, and maintenance.

IMPORTANT

Read this manual before taking your first ride and use it for future reference as well.

Additional safety, performance, and service information related to specific components such as suspension, pedals, and other accessories, such as helmets or lights you have purchased. Make sure your nearest authorized dealer has given all the manufacturing literature which includes in your bicycle and accessories. In case of conflict between the instructions and information provided in this manual, always follow the component manufacturer's instructions.

If you have any questions or do not understand something within this guide, take responsibility for your safety and consult with your nearest authorized dealer or the bicycle's manufacturer.

NOTE

This manual is not intended for comprehensive use, service repair, or service manual. Please see your nearest authorized dealer for all service, repairs, and maintenance-related action. Your dealer is also able to refer you to classes, clinics, or books for service or maintenance.

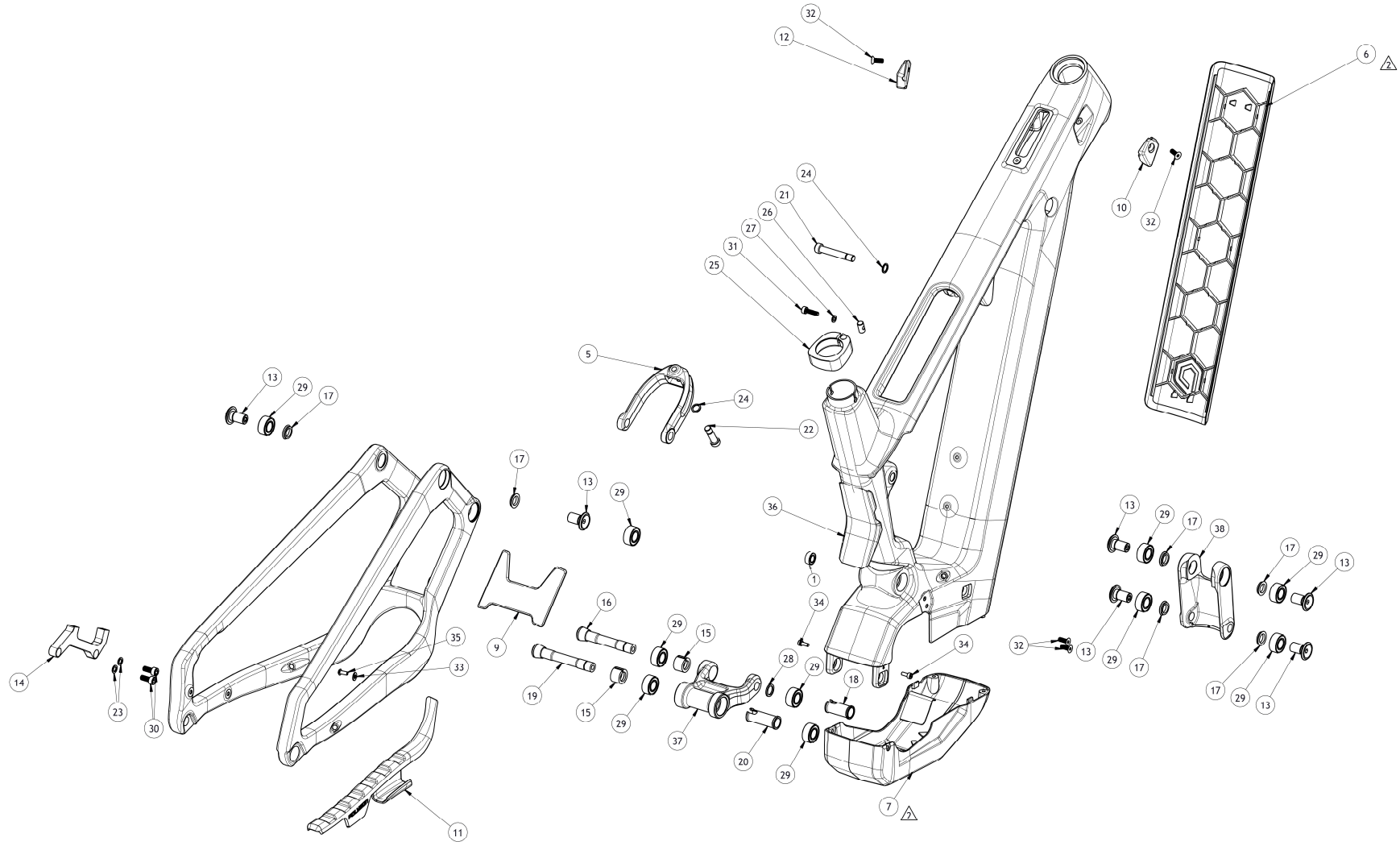
WARNING

To ensure the warranty of your bicycle, be sure to only use the original spare parts.

COLLOSUS TE
TABLE OF CONTENT

01	INTRODUCTION
02	TABLE OF CONTENT
03	EXPLODED VIEW
04	FRAME KITS
07	ELECTRICAL PART
10	POWERTUBE BATTERY OVERVIEW
11	ELECTRICAL PART WIRING
12	REGULAR INSPECTION
13	HOW TO CLEAN THE BIKE
14	HOW TO CLEAN THE BIKE'S CHAIN

COLLOSUS TE
EXPLODED VIEW



COLLOSUS TE
FRAME KITS

PART	ARTICLE	ITEM	ITEM DETAILS	TORQUE (N.m)	QTY / FRAME	SOLD
5	741371	SHOCK YOKE	SHOCK YOKE (PLG-47-501)	-	1	PER PIECES
6	741372	BATTERY COVER	DOWN TUBE BATTERY COVER (PLG-47-901)	-	1	PER PIECES
7	741400	DRIVE UNIT COVER AND BOLT SET	DRIVE UNIT COVER (PLG-47-902)	-	1	AS A SET
34			M4x0.7x10 SOCKET HEAD BOLT	1-2	4	
9	741365	PIVOT PROTECTOR SET	PIVOT PROTECTOR (PLG-44-803)	-	1	AS A SET
36			PIVOT PROTECTOR (PLG-44-807)	-	1	
11	741396	CS PROTECTOR AND BOLT SET	CHAIN STAY PROTECTOR	-	1	AS A SET
33			WASHER M4	-	1	
35			M4x0.7x10 BUTTON HEAD BOLT	1-2	1	
10	741373	CABLE GUIDE AND BOLT SET	CABLE GUIDE (PLG-44-806)	-	1	AS A SET
12			CABLE GUIDE (PLG-44-809)	-	1	
32			BOLT M5x12mm	1-2	2	
13	741393	PIVOT BOLT	PIVOT BOLT (PLG-44-901)	20	6	PER 2 PIECES

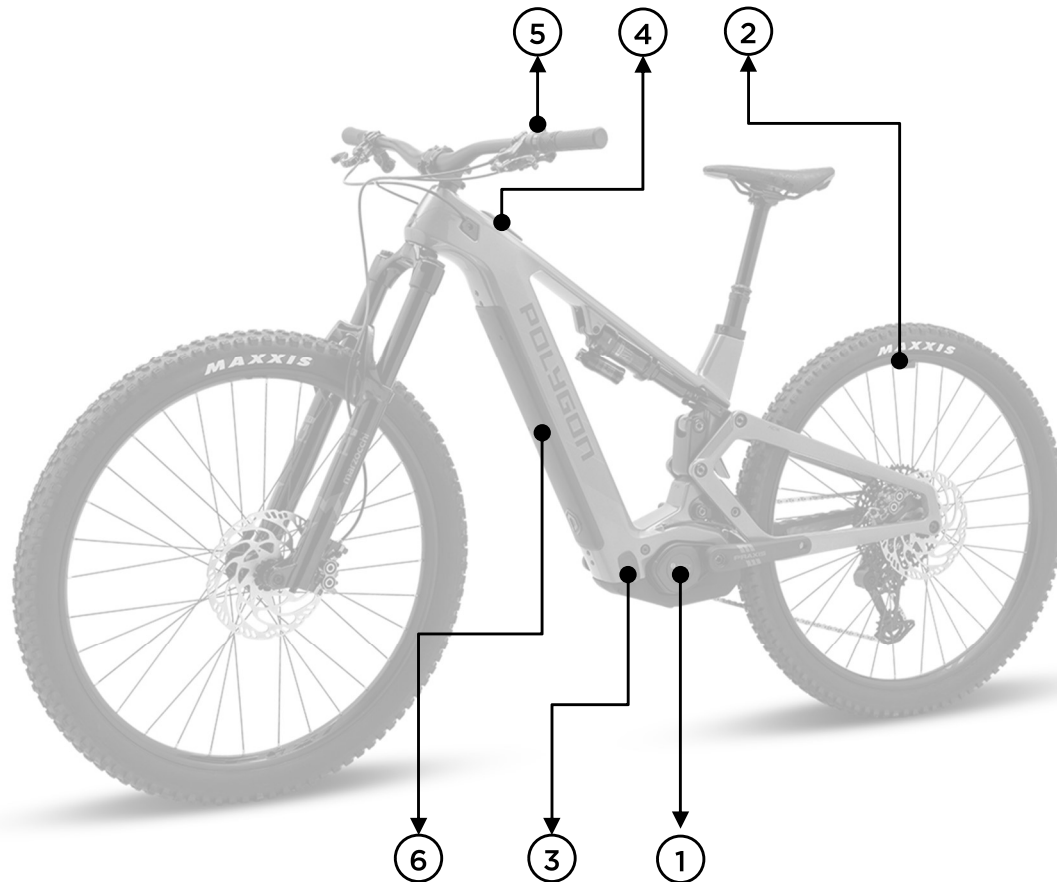
COLLOSUS TE
FRAME KITS

PART	ARTICLE	ITEM	ITEM DETAILS	TORQUE (N.m)	QTY / FRAME	SOLD
14			BRAKE MOUNT (PLG-44-908)	-	1	
23	741394	BRAKE MOUNT AND BOLT SET	WASHER (PLG-44-922)	-	2	AS A SET
30			BOLT (91292A070)	6-8	2	
15			MAIN PIVOT EXPANDER	-	1	
16	741367	MAIN PIVOT AXLE SET	AXLE (PLG-44-911)	18-20	1	AS A SET
18			SLEEVE (PLG-44-915)	-	1	
28			WASHER (PLG-44-936)	-	1	
15			MAIN PIVOT EXPANDER	-	1	
19	741368	LOWER LINK AXLE SET	AXLE (PLG-44-916)	18-20	1	AS A SET
20			SLEEVE (PLG-44-918)	-	1	
17	735301	BEARING SPACER	ID12, OD16, L3	-	6	PER 4 PIECES
21			SHOCK BOLT (PLG-44-919)	10	1	
22	741399	SHOCK BOLT SET	BOLT (PLG-44-921)	10	1	AS A SET
24			WASHER (PLG-44-924)	-	2	

COLLOSUS TE
FRAME KITS

PART	ARTICLE	ITEM	ITEM DETAILS	TORQUE (N.m)	QTY / FRAME	SOLD
25			SEAT CLAMP	-	1	
26	741369	SEAT CLAMP SET	BARREL NUT (PLG-44-931)	-	1	AS A SET
27			WASHER (PLG-44-932)	-	1	
31			BOLT (91292A127)	6	1	
29	741382	ENDURO BEARING	3901 LLU MAX ENDURO BEARING	-	10	PER 2 PIECES
37	741390	LOWER LINK	LOWER LINK ASSEMBLY	-	1	PER PIECE
38	741391	UPPER LINK	UPPER LINK ASSEMBLY	-	1	PER PIECE
n/a	741398	CHAIN GUIDE	CHAIN GUIDE	-	1	PER PIECE

COLLOSUS TE
ELECTRICAL PARTS



ELECTRICAL PART MANUAL GUIDE

Check the link or scan the QR code to see how to operate the electrical part of Collosus TE



**BOSCH
PERFORMANCE LINE CX
MANUAL GUIDE**



**BOSCH
BATTERY CHARGER
MANUAL GUIDE**



**BOSCH
POWERTUBE 800
BBP3880
MANUAL GUIDE**



**BOSCH
POWERTUBE 800
BBP3885
MANUAL GUIDE**



**BOSCH
SYSTEM CONTROLLER
AND MINI REMOTE
MANUAL GUIDE**



**POLYGON
PELELEC
OWNER MANUAL**

COLLOSUS TE
ELECTRICAL PARTS

NO	ITEM	QTY	COLLOSUS TE (EU)	COLLOSUS TE (ID)	COLLOSUS TE (CI)
1	DRIVE UNIT COMPONENTS	1		BOSCH PERFORMANCE LINE CX EB11.100.00E	
		1		DRIVE UNIT LOCKRING EB11.200.0JH	
		1		LOGO BEZEL EB11.200.0KD	
		1		O-RING 1270.016.119	
		2		NUT M8x1 EB11.200.03C	
		1		SCREW M8x1x68,7 SHORT EB11.200.0N9	
		1		BOLT WIDE INTERFACE EB11.200.0T1	
		2		INSERT SLEEVE EB11.200.0GK	
		1		DRIVE UNIT ADAPTER EB11.200.0T9	
2	RIM MAGNET SPEED SENSOR	1		RIM MAGNET EB11.200.015	
		1		SLEEVE EB11.200.02S	
3	CHARGING SOCKET COMPONENTS	1		SOCKET COVER EB12.120.01B	
		1		SOCKET HOLDER EB12.120.01A	
		1		O-RING 24x2 EB12.120.019	
		2		SCREW M3x14 F04N.002.663	
		1		CHARGING SOCKET CABLE 350MM EB12.120.03W	
4	SYSTEM CONTROLLER	1		SYSTEM CONTROLLER EB13.100.000	
5	MINI REMOTE	1		MINI REMOTE EB13.100.01E	
n/a	HMI CABLE	1		HMI CABLE 1000MM EB12.120.007	

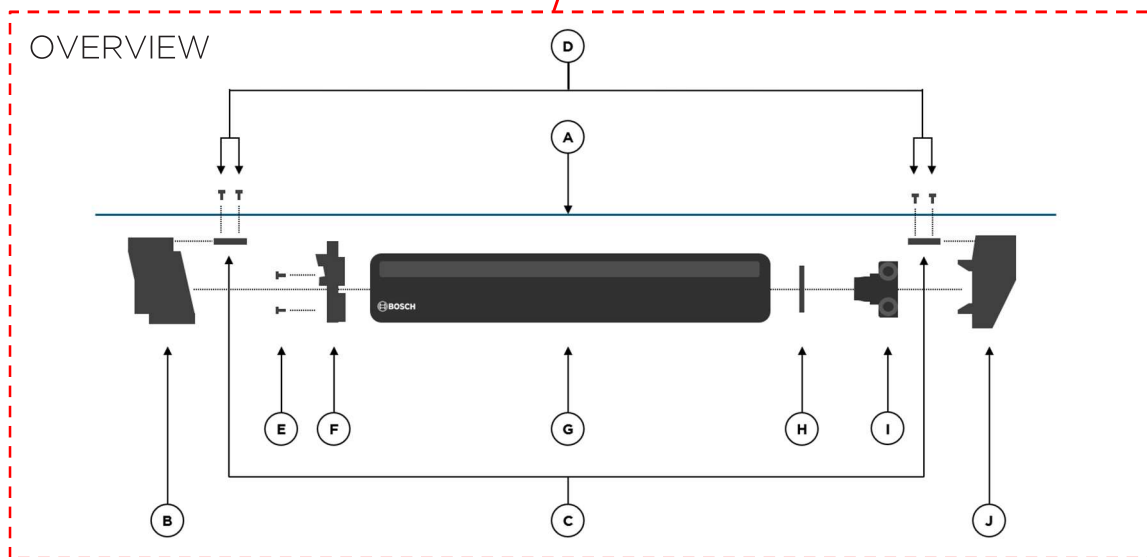
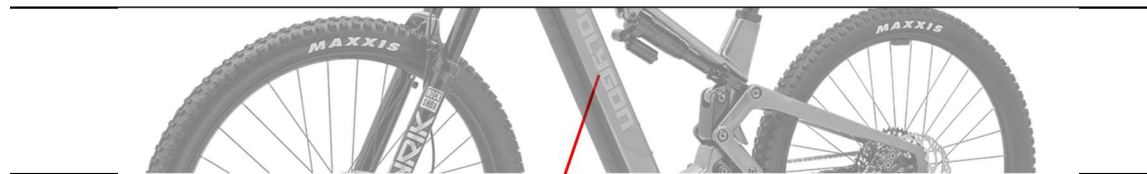
COLLOSUS TE
ELECTRICAL PARTS

NO	ITEM	QTY	COLLOSUS TE (EU)	COLLOSUS TE (ID)	COLLOSUS TE (C1)
6	BATTERY COMPONENTS	1	LOCKING ASSEMBLY INVERTED EB12.200.0WF		
		2	CLAMPING PLATE B12.200.0LG		
		4	CLAMPING PLATE SCREW EB12.100.01Y		
		4	SCREW FOR SCREW ON PLATE F04N.002..664		
		1	SCREW ON PLATE EB12.200.0L4		
		1	BATTERY POWERTUBE 800WH EB12.100.04Z (EU)	BATTERY POWERTUBE 800WH EB12.100.051 (US)	
		1	BATTERY ADAPTER EB12.100.015		
		1	DAMPER FOIL PORON PLUG EB12.200.0LK		
		1	CRADLE INVERTED EB12.200.0U0		
		1	CAP FOR CRADLE FRAME EB12.200.0U1		
n/a	BATTERY CABLE	1	BATTERY CABLE 350MM TAPED EB12.120.02R		
n/a	BATTERY CHARGER	1	BATTERY CHARGER 4A 230V EB12.110.001 (EU)	BATTERY CHARGER 4A 110V EB12.110.000 (US)	
n/a	POWER CABLE	1	POWER CABLE 1270.020.330 (EU)	POWER CABLE 1270.020.343 (US)	

COLLOSUS TE
POWERTUBE BATTERY OVERVIEW

WARNING

The installation of electrical components must only be performed by an authorized Polygon Bikes dealer. Damage to components resulting from incorrect installation may void the warranty on those components.



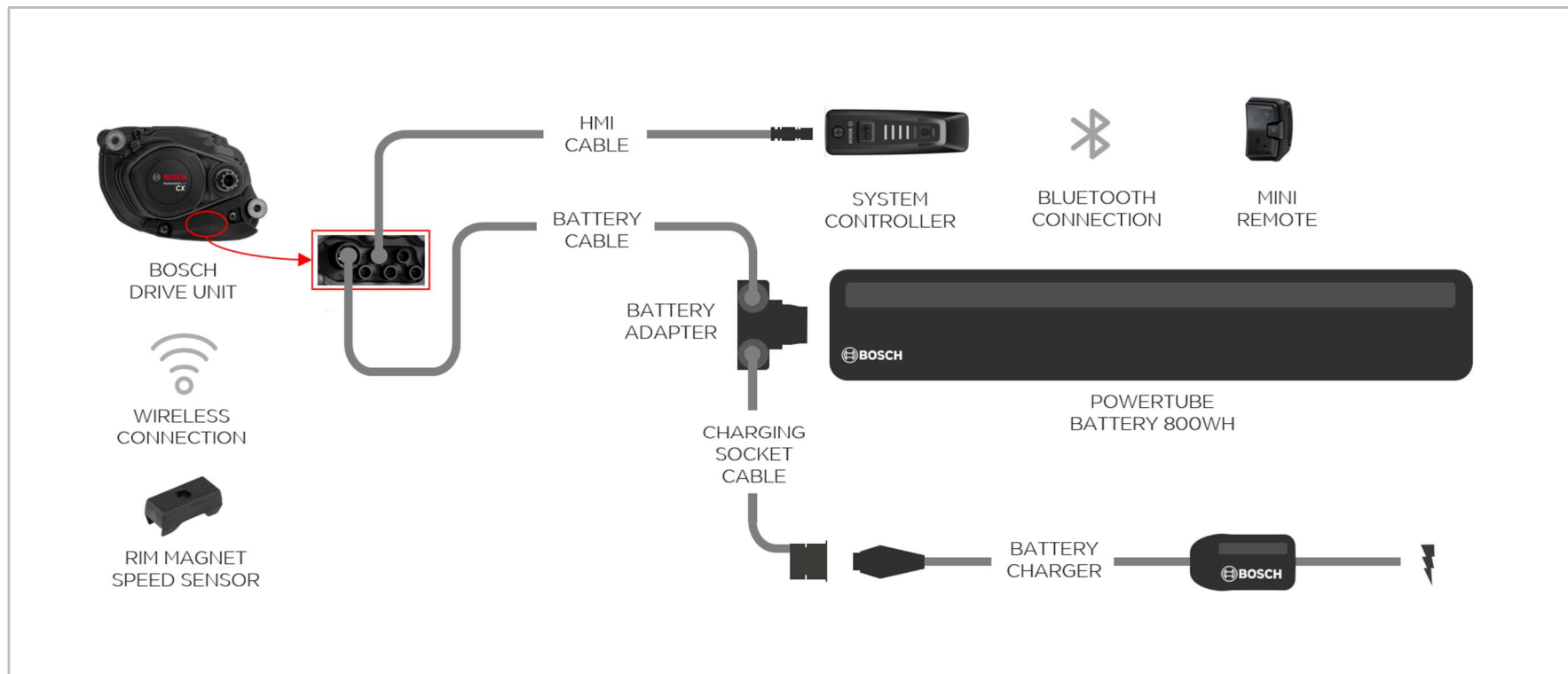
BOSCH
BATTERY COMPONENTS

ITEM	ITEM DETAIL	QTY
A	FRAME (DOWN TUBE)	1
B	LOCKING ASSEMBLY INVERTED	1
C	CLAMPING PLATE	2
D	CLAMPING PLATE SCREW	4
E	SCREW FOR SCREW ON PLATE	4
F	SCREW ON PLATE	1
G	BATTERY POWERTUBE	1
H	DAMPER FOIL PORON PLUG	1
I	BATTERY ADAPTER	1
J	CRADLE INVERTED	1

COLLOSUS TE
ELECTRICAL PART WIRING

WARNING

The installation of electrical components must only be performed by an authorized Polygon Bikes dealer. Damage to components resulting from incorrect installation may void the warranty on those components.



COLLOSUS TE
REGULAR INSPECTION**REGULAR INSPECTIONS BEFORE RIDING THE BICYCLE**

Before riding the bicycle, check the following items. If any problems are found, consult your place of purchase or a distributor.

 Does the drive train perform gear shifting smoothly? Are the components securely installed to the frame/ handlebar/ stem, etc.? Is there sufficient charge remaining in the battery? Is there any looseness or damage in the component parts? Do any abnormal noises occur while riding?**AVOID**

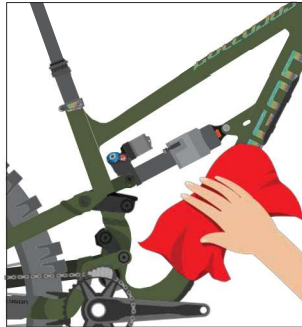
Avoid wearing clothing that may get caught in a chain or wheel, as this may cause an accident.

COLLOSUS TE
HOW TO CLEAN THE BIKES



1

Use a bike wash or wet cloth to clean up every part of your bike. Preferably using a specific cleaner for the bike



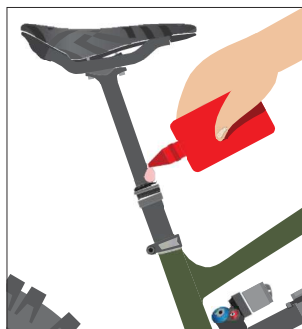
2

Wipe the bike immediately until it's dry. Do not leave it in wet conditions for a long time.



3

Clean up the drivetrain with a clean and dry cloth.



4

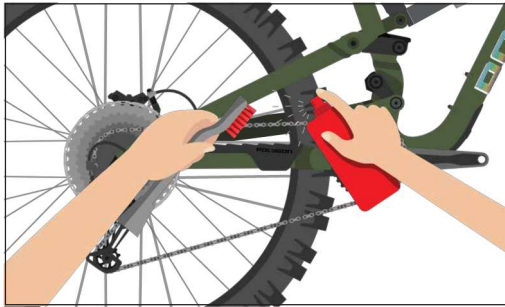
Check and lubricate every component if needed, especially 2 or more components that rub against each other, such as the seat post, bottom bracket, hub, pivot frame suspension, ect

NOTE

- Use the right bike wash to make sure your every bike component and frame is safe.
- Avoid washing the bike using high - pressure water
- It is highly recommended to use specific lubricants for bicycle parts, not with engine vehicles or other oil since it might lead to component performance reduction
- It is recommended to use a bike cleaner rather than detergent, solvent like acetone, and thinner to clean the bike parts.

COLLOSUS TE

HOW TO CLEAN THE BIKE'S CHAIN



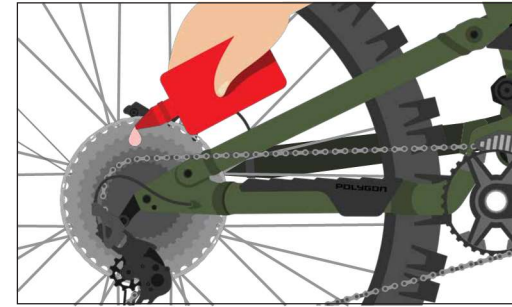
1

Use a bike chain cleaner and gently brush it.



2

Wipe with a clean and dry cloth, and let it dry for minutes.



3

Lube the chain regularly

POLYGON

OWNER MANUAL