

POLYGON

OWNER MANUAL





COLLOSUS N



COLLOSUS N9 D12 CB



COLLOSUS N8 CB

CONGRATULATIONS!

Congratulations for buying Polygon Bikes! A bicycle is a great tool for transportation and recreation. Hopefully, you can find enjoyment and have a great deal of use in every ride. This manual contains important information which includes safety, performance, and maintenance.

IMPORTANT

Read this manual before taking your first ride and use it for future reference as well.

Additional safety, performance, and service information related to specific components such as suspension, pedals, and other accessories, such as helmets or lights you have purchased. Make sure your nearest authorized dealer has given all the manufacturing literature which includes in your bicycle and accessories. In case of conflict between the instructions and information provided in this manual, always follow the component manufacturer's instructions.

If you have any questions or do not understand something within this guide, take responsibility for your safety and consult with your nearest authorized dealer or the bicycle's manufacturer.

NOTE

This manual is not intended for comprehensive use, service repair, or service manual. Please see your nearest authorized dealer for all service, repairs, and maintenance-related action. Your dealer is also able to refer you to classes, clinics, or books for service or maintenance.

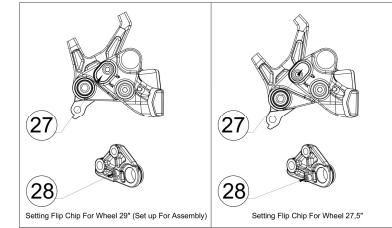
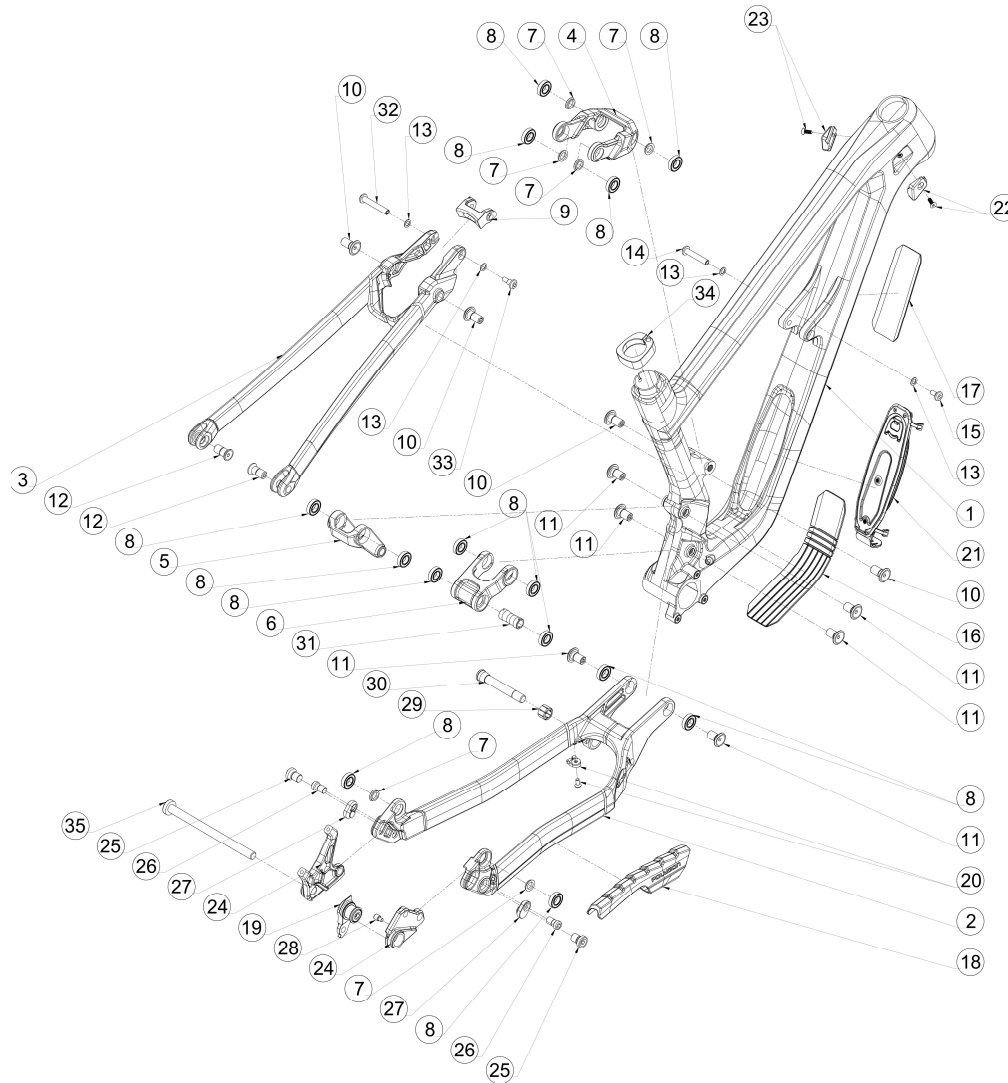
WARNING

To ensure the warranty of your bicycle, be sure to only use the original spare parts.

COLLOSUS N CB
TABLE OF CONTENT

01	INTRODUCTION
02	TABLE OF CONTENT
03	EXPLODED VIEW
04	FRAME KITS
07	CABLE ROUTING
09	REGULAR INSPECTION
10	HOW TO CLEAN THE BIKE
11	HOW TO CLEAN THE BIKE'S CHAIN

COLLOSUS N CB
EXPLODED VIEW



COLLOSUS N CB
FRAME KITS

PART	ARTICLE	ITEM	ITEM DETAILS	TORQUE (N.m)	QTY / FRAME	SOLD
4	741385	LINKAGE	SHOCK LINK FOR COLLOSUS N	-	1	PER PIECE
5	736040	SECOND LINK	SECOND LINK FOR COLLOSUS N	-	1	PER PIECE
6	741386	FIRST LINK	FIRST LINK FOR COLLOSUS N	-	1	PER PIECE
7	735301	BEARING SPACER	ID12, OD16, L3	-	6	PER 4 PIECES
8	733707	SEALED BALL BEARING	ID12, OD24, L6	-	14	PER PIECE
9	741360	BRIDGE SEAT STAY	BRIDGE SS FOR COLLOSUS N	-	1	PER PIECE
10	735298	PIVOT BOLT	M12x1.25, L26.5, T16.2, HEX5	20	4	PER 2 PIECES
11	736038	PIVOT BOLT	M12x1.25, L23, 14.7, HEX5	20	6	PER PIECE
12	735299	PIVOT BOLT	M12x1.25, L26, T12, HEX5	20	2	PER 2 PIECES
13			WASHER ID8.5, OD13.5	-	2	
14	741377	REAR SHOCK BOLT AND NUT SET	PIVOT SHAFT FEMALE M6x1.0, L47.5, T15, HEX6	12	1	AS A SET
15			PIVOT BOLT MALE M6x1.0, L18, T9.5 HEX5	12	1	

**COLLOSUS N CB
FRAME KITS**

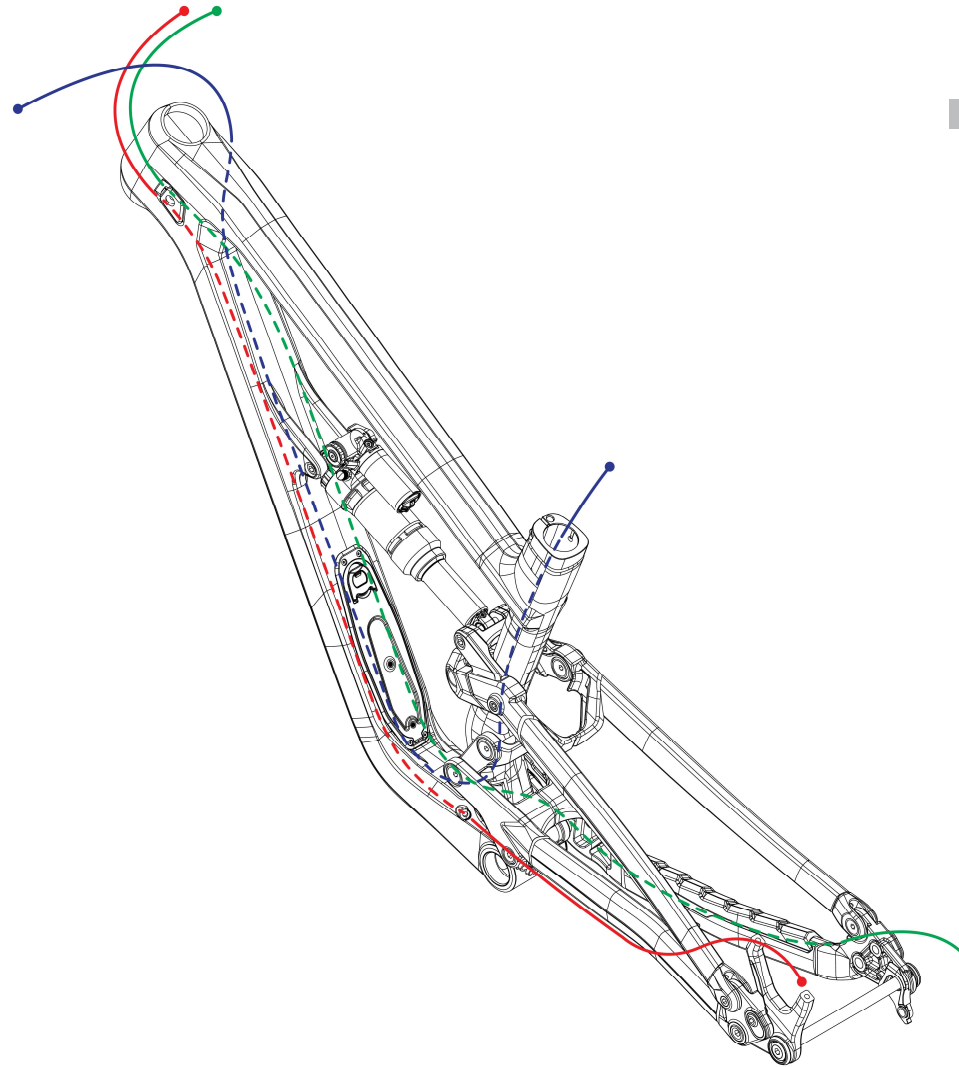
PART	ARTICLE	ITEM	ITEM DETAILS	TORQUE (N.m)	QTY / FRAME	SOLD
16	741419	DT PROTECTOR	DOWN TUBE PROTECTOR	-	1	PER PIECE
17	741418	DT SHUTTLE PAD	DOWNTUBE SHUTTLE PAD	-	1	PER PIECE
18	736043	CS PROECTOR	RUBBER CHAIN STAY POROTECTOR	-	1	PER PIECE
19	738268	UDH	UNIVERSAL DERAILLEUR HANGER	25	1	PER PIECE
20	736045	CABLE GUIDE WITH BOLT	CABLE GUIDE W/ BOLT M5x0.8, L16, HEX3	-	1	PER PIECE
21	741423	DT STORAGE	DOWN TUBE STORAGE FOR COLLOSUS	-	1	PER PIECE
22			CABLE GUIDE (PLG-44-809)	-	1	
23	741373	CABLE GUIDE AND BOLT SET	CABLE GUIDE (PLG-44-806)	-	1	AS A SET
n/a			BOLT M5x12mm	1-2	2	
24	741362	DROP OUT	LEFT AND RIGHT DROP OUT FOR COLLOSUS N	-	1	PER PIECE
25	741363	REAR END BOLT	BOLT M12X1.25, L20.5, T9, HEX6	20	2	PER 2 PIECES
26	741379	REAR END FLIP CHIP BOLT	BOLT M10X1.25, L22.5, T9, HEX6	15	2	PER 2 PIECES
27	741380	REAR END FLIP CHIP	REAR END FLIP CHIP ADAPTER	-	2	PER 2 PIECES

COLLOSUS N CB
FRAME KITS

PART	ARTICLE	ITEM	ITEM DETAILS	TORQUE (N.m)	QTY / FRAME	SOLD
28	741378	BOLT UDH STOPPER	BOLT M5X0.8, L14, T6, HEX4	-	1	PER PIECE
29			EXPANDANDABLE FLOATING SPACER	-	1	
30	741387	FIRST LINK EXPANDER SET	PIVOT SHAFT M12X1.25, L85, T15.5, HEX6	20	1	AS A SET
31			PIVOT SPACER ID12, OD14.5, L40	-	1	
13			WASHER ID8.5, OD13.5	-	2	
32	741388	SHOCK MOUNT BOLT SET	PIVOT SHAFT FEMALE M6X1.0, L53.5, T20, HEX6	12	1	AS A SET
33			PIVOT BOLT MALE M6x1.0, L23, T10.5, HEX6	12	1	
34	741369	SEAT CLAMP SET	SEAT CLAMP SET	-	1	AS A SET
35	741722	REAR THRU AXLE	M12X1.0, L174, T16.5, HEX5	11	1	PER PIECE

COLLOSUS N CB
CABLE ROUTING

CABLE ROUTING
REAR RIGHT



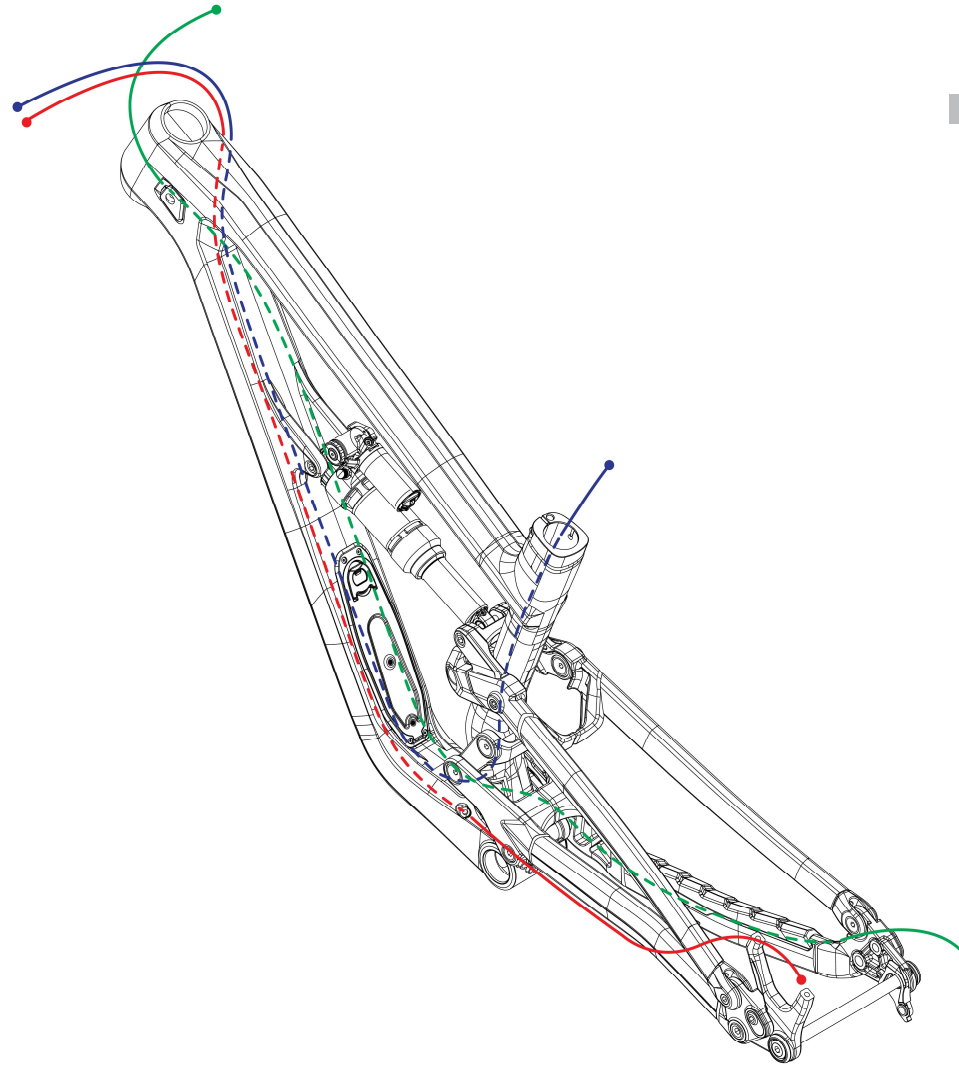
COLLOSUS N CB

LEGEND

- Rear Brake Hose
- RD Cable
- Dropper Post Cable

COLLOSUS N CB
CABLE ROUTING

CABLE ROUTING
REAR LEFT



COLLOSUS N CB

LEGEND

- Rear Brake Hose
- RD Cable
- Dropper Post Cable

COLLOSUS N CB
REGULAR INSPECTION**REGULAR INSPECTIONS BEFORE RIDING THE BICYCLE**

Before riding the bicycle, check the following items. If any problems are found, consult your place of purchase or a distributor.

Does the drive train perform gear shifting smoothly?

Are the components securely installed to the frame/ handlebar/ stem, etc.?

Is there sufficient charge remaining in the battery?

Is there any looseness or damage in the component parts?

Do any abnormal noises occur while riding?

AVOID

Avoid wearing clothing that may get caught in a chain or wheel, as this may cause an accident.

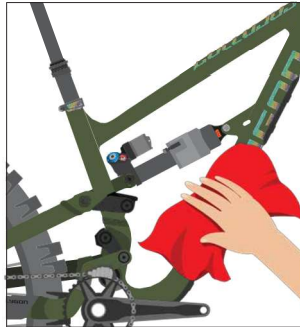
COLLOSUS N CB

HOW TO CLEAN THE BIKE



1

Use a bike wash or wet cloth to clean up every part of your bike. Preferably using a specific cleaner for the bike



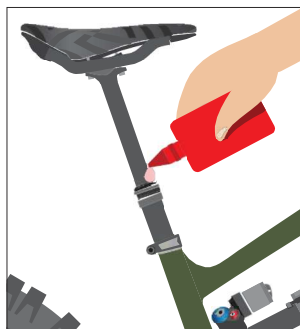
2

Wipe the bike immediately until it's dry. Do not leave it in wet conditions for a long time.



3

Clean up the drivetrain with a clean and dry cloth.



4

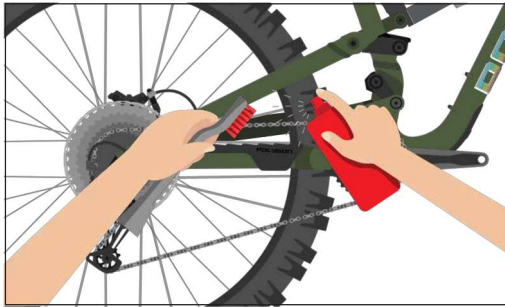
Check and lubricate every component if needed, especially 2 or more components that rub against each other, such as the seat post, bottom bracket, hub, pivot frame suspension, ect

NOTE

- Use the right bike wash to make sure your every bike component and frame is safe.
- Avoid washing the bike using high - pressure water
- It is highly recommended to use specific lubricants for bicycle parts, not with engine vehicles or other oil since it might lead to component performance reduction
- It is recommended to use a bike cleaner rather than detergent, solvent like acetone, and thinner to clean the bike parts.

COLLOSUS N CB

HOW TO CLEAN THE BIKE'S CHAIN



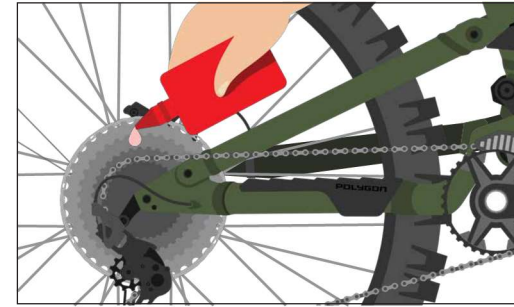
1

Use a bike chain cleaner and gently brush it.



2

Wipe with a clean and dry cloth, and let it dry for minutes.



3

Lube the chain regularly

POLYGON

OWNER MANUAL