

POLYGON

OWNER MANUAL





XTRADA



XTRADA 7



XTRADA



XTRADA 6



XTRADA



XTRADA 5

CONGRATULATIONS!

Congratulations for buying Polygon Bikes! A bicycle is a great tool for transportation and recreation. Hopefully, you can find enjoyment and have a great deal of use in every ride. This manual contains important information which includes safety, performance, and maintenance.

IMPORTANT

Read this manual before taking your first ride and use it for future reference as well.

Additional safety, performance, and service information related to specific components such as suspension, pedals, and other accessories, such as helmets or lights you have purchased. Make sure your nearest authorized dealer has given all the manufacturing literature which includes in your bicycle and accessories. In case of conflict between the instructions and information provided in this manual, always follow the component manufacturer's instructions.

If you have any questions or do not understand something within this guide, take responsibility for your safety and consult with your nearest authorized dealer or the bicycle's manufacturer.

NOTE

This manual is not intended for comprehensive use, service repair, or service manual. Please see your nearest authorized dealer for all service, repairs, and maintenance-related action. Your dealer is also able to refer you to classes, clinics, or books for service or maintenance.

WARNING

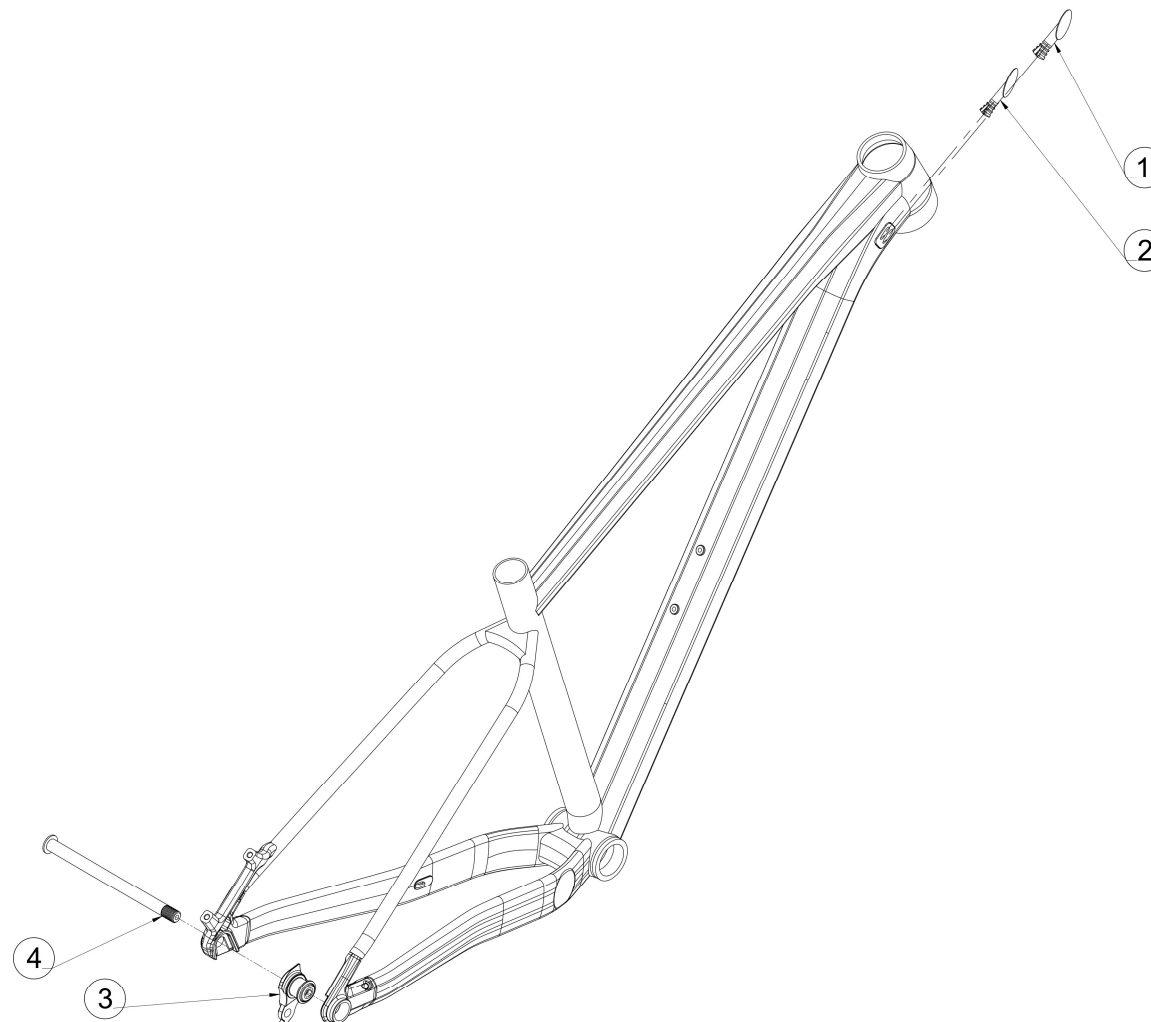
To ensure the warranty of your bicycle, be sure to only use the original spare parts.

XTRADA

TABLE OF CONTENT

01	INTRODUCTION
02	TABLE OF CONTENT
03	EXPLODED VIEW
04	FRAME PARTS
05	CABLE ROUTING
07	REGULAR INSPECTION
08	HOW TO CLEAN THE BIKE
09	HOW TO CLEAN THE BIKE'S CHAIN

XTRADA
EXPLODED VIEW



XTRADA
FRAME PARTS

NO	ARTICLE	ITEM	ITEM DETAILS	TORQUE (N.M)	QTY / FRAME	SOLD
1	742015	GROMMET SNAP-IN PLUG SET	RUBBER GROMMET SNAP-IN PLUG FOR 5mm HOLE	-	1	AS A SET
2			RUBBER GROMMET SNAP-IN PLUG FOR 4mm HOLE	-	1	
3	738268	UDH	UNIVERSAL DERAILLEUR HANGER	25	1	PER PIECE
4	741722	REAR THRU AXLE	M12x1.0, L174, T16.5, HEX6	11	1	PER PIECE

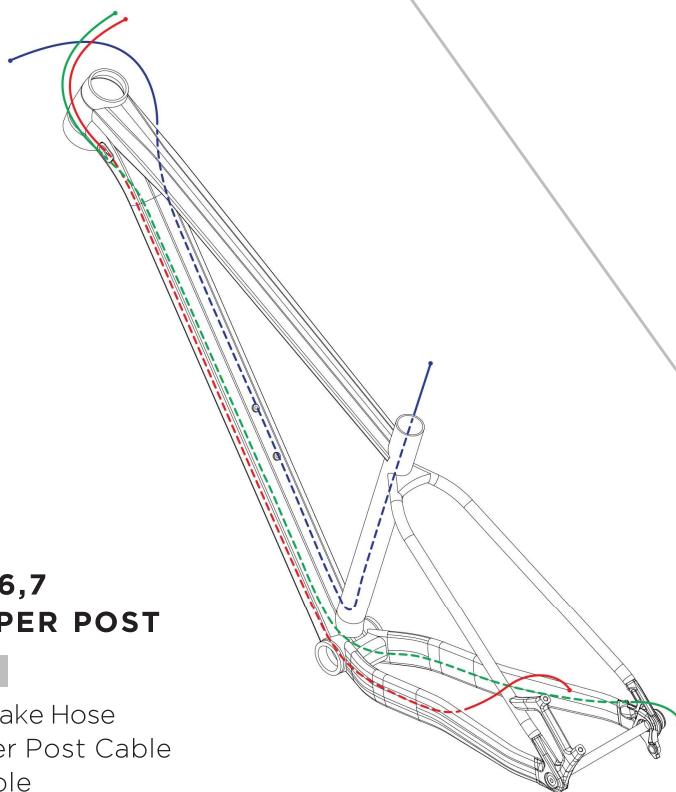
XTRADA
CABLE ROUTING

REAR RIGHT

**XTRADA 6,7
w/ DROPPER POST**

LEGEND

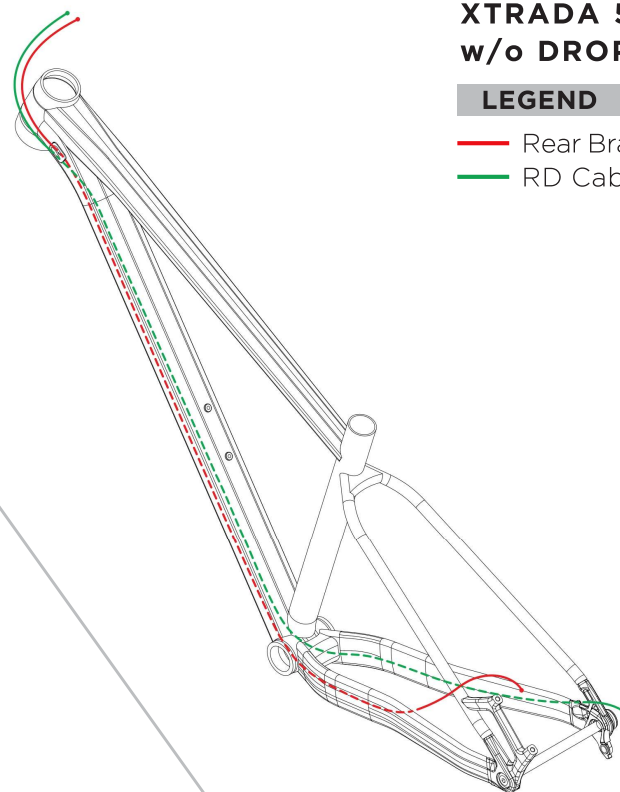
- Rear Brake Hose
- Dropper Post Cable
- RD Cable



**XTRADA 5
w/o DROPPER POST**

LEGEND

- Rear Brake Hose
- RD Cable



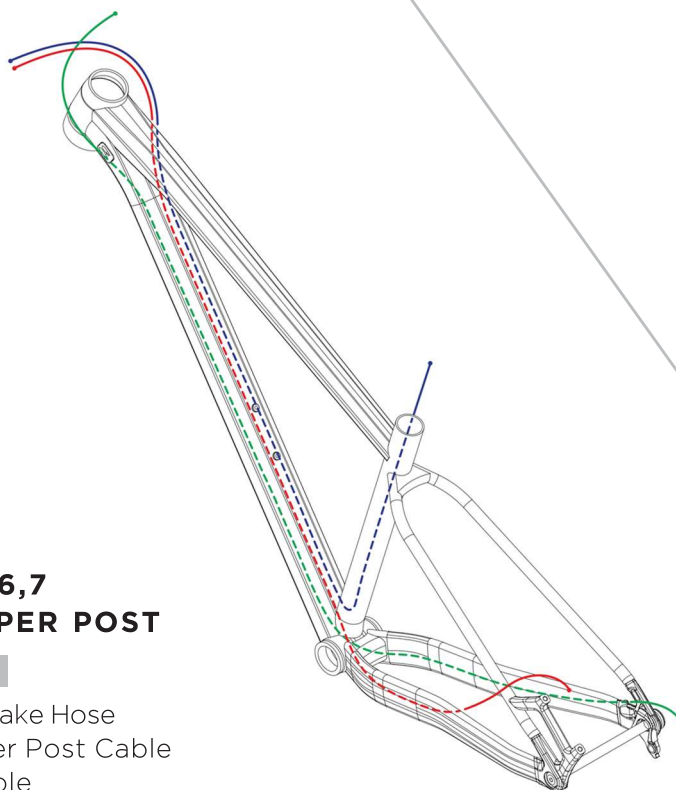
XTRADA
CABLE ROUTING

REAR LEFT

**XTRADA 6,7
w/ DROPPER POST**

LEGEND

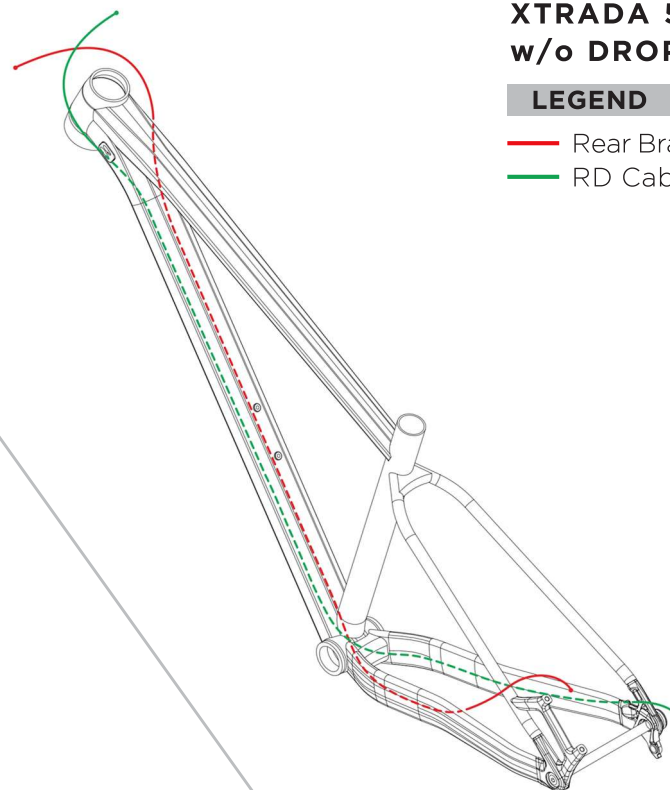
- Rear Brake Hose
- Dropper Post Cable
- RD Cable



**XTRADA 5
w/o DROPPER POST**

LEGEND

- Rear Brake Hose
- RD Cable



XTRADA

REGULAR INSPECTION

REGURAL INSPECTIONS BEFORE RIDING THE BICYCLE

Before riding the bicycle, check the following items. If any problems are found, consult your place of purchase or a distributor.

☐

Does the drive train perform gear shifting smoothly?

☐

Are the components securely installed to the frame/ handlebar/ stem, etc.?

☐

Is there sufficient charge remaining in the battery?

☐

Is there any looseness or damage in the component parts?

☐

Do any abnormal noises occur while riding?

AVOID

Avoid wearing clothing that may get caught in a chain or wheel, as this may cause an accident.

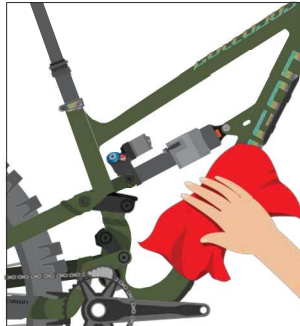
XTRADA

HOW TO CLEAN THE BIKES



1

Use a bike wash or wet cloth to clean up every part of your bike. Preferably using a specific cleaner for the bike



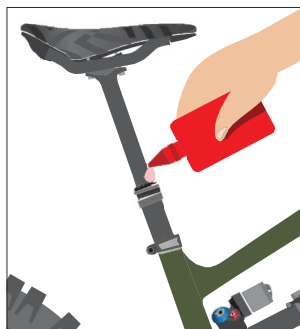
2

Wipe the bike immediately until it's dry. Do not leave it in wet conditions for a long time.



3

Clean up the drivetrain with a clean and dry cloth.



4

Check and lubricate every component if needed, especially 2 or more components that rub against each other, such as the seat post, bottom bracket, hub, pivot frame suspension, ect

NOTE

- Use the right bike wash to make sure your every bike component and frame is safe.
- Avoid washing the bike using high - pressure water
- It is highly recommended to use specific lubricants for bicycle parts, not with engine vehicles or other oil since it might lead to component performance reduction
- It is recommended to use a bike cleaner rather than detergent, solvent like acetone, and thinner to clean the bike parts.

XTRADA

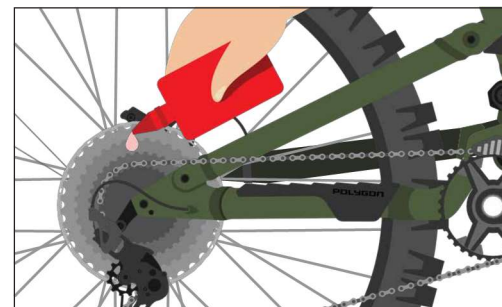
HOW TO CLEAN THE BIKE'S CHAIN

**1**

Use a bike chain cleaner and gently brush it.

**2**

Wipe with a clean and dry cloth, and let it dry for minutes.

**3**

Lube the chain regularly

POLYGON

OWNER MANUAL