

POLYGON

OWNER MANUAL





STRATTOS C



STRATTOS C9 AXS



STRATTOS C



STRATTOS C8 DI2



STRATTOS C



STRATTOS C7 DI2

CONGRATULATIONS!

Congratulations for buying Polygon Bikes! A bicycle is a great tool for transportation and recreation. Hopefully, you can find enjoyment and have a great deal of use in every ride. This manual contains important information which includes safety, performance, and maintenance.

IMPORTANT

Read this manual before taking your first ride and use it for future reference as well.

Additional safety, performance, and service information related to specific components such as suspension, pedals, and other accessories, such as helmets or lights you have purchased. Make sure your nearest authorized dealer has given all the manufacturing literature which includes in your bicycle and accessories. In case of conflict between the instructions and information provided in this manual, always follow the component manufacturer's instructions.

If you have any questions or do not understand something within this guide, take responsibility for your safety and consult with your nearest authorized dealer or the bicycle's manufacturer.

NOTE

This manual is not intended for comprehensive use, service repair, or service manual. Please see your nearest authorized dealer for all service, repairs, and maintenance-related action. Your dealer is also able to refer you to classes, clinics, or books for service or maintenance.

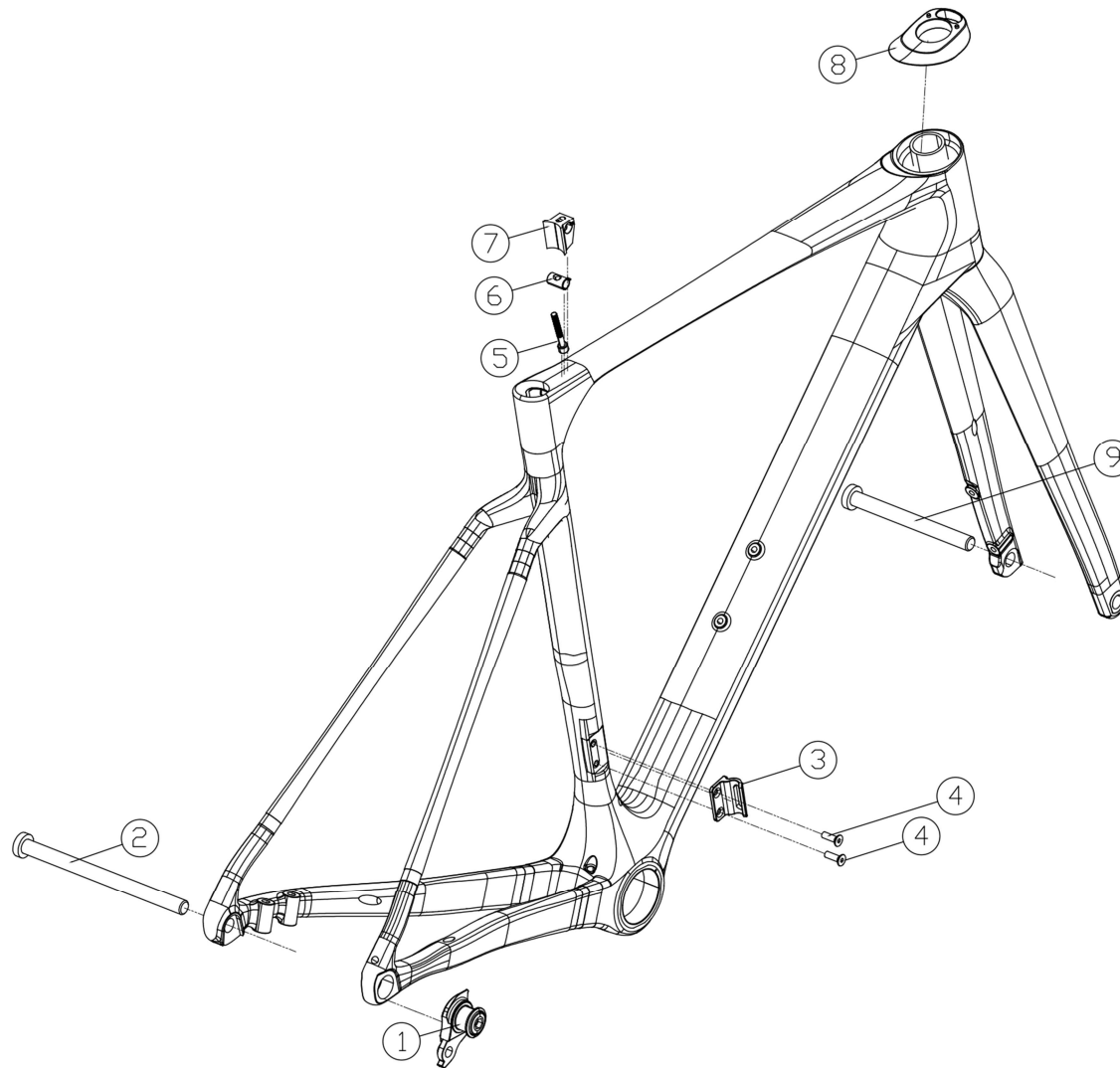
WARNING

To ensure the warranty of your bicycle, be sure to only use the original spare parts.

STRATTOS C
TABLE OF CONTENT

01	INTRODUCTION
02	TABLE OF CONTENT
03	EXPLODED VIEW
04	FRAME PARTS
05	CABLE ROUTING
06	GROUPSET PARTS
07	REGULAR INSPECTION
08	HOW TO CLEAN THE BIKE
09	HOW TO CLEAN THE BIKE'S CHAIN

STRATTOS C
EXPLODED VIEW



STRATTOS C
FRAME PARTS

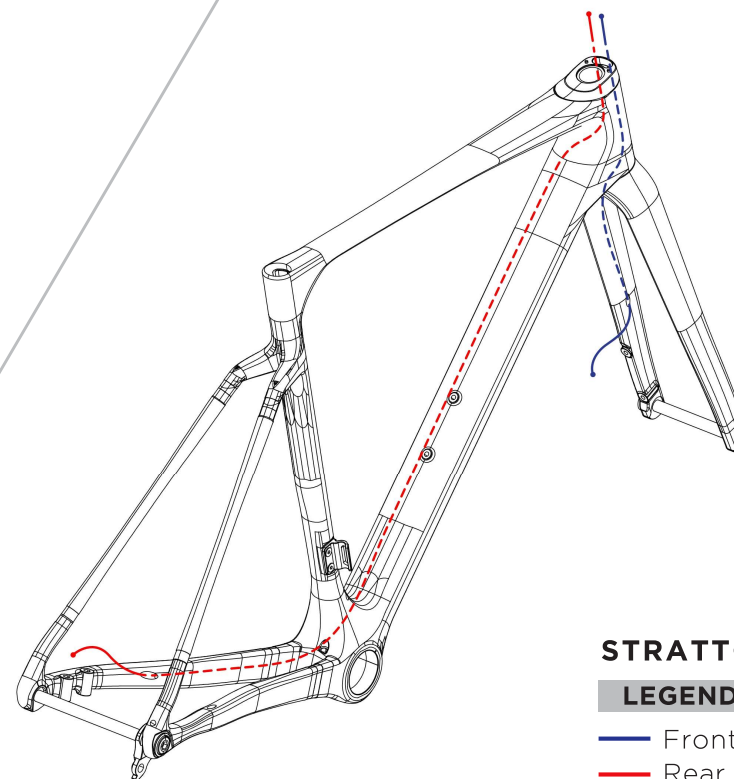
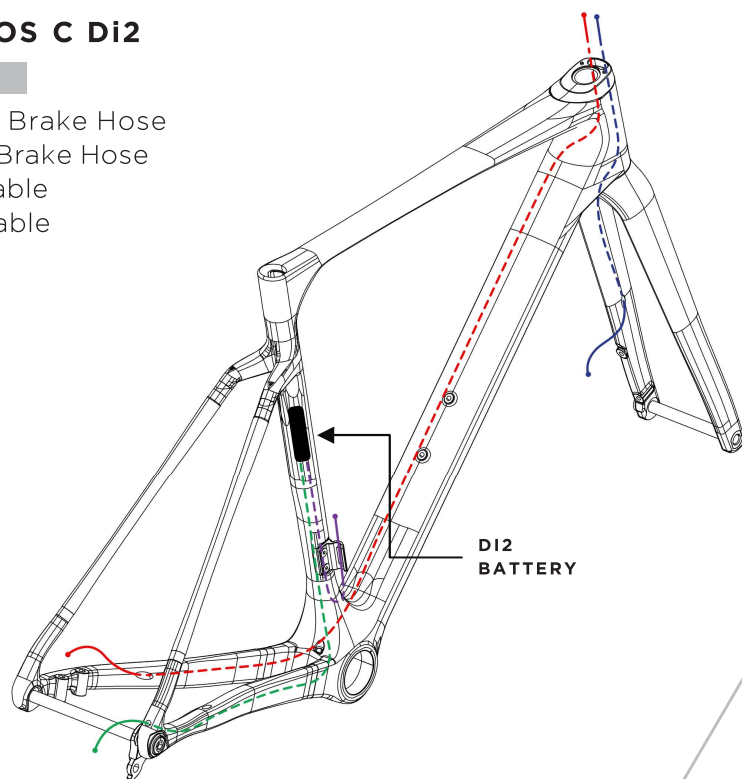
NO	ARTICLE	ITEM	ITEM DETAILS	TORQUE (N.M)	QTY / FRAME	SOLD
1	738268	UDH	UNIVERSAL DERAILLEUR HANGER	25	1	PER PIECE
2	741329	REAR THRU AXLE	M12x1.0, L168, T13mm, HEX6	10-16	1	PER PIECE
3	742052	FD CLAMP SET	FD CLAMP FOR STRATTOS C	-	1	AS A SET
4			BOLT M5x11mm	5-7	2	
5			BOLT M5x35mm	6-8	1	
6	742053	SEAT POST WEDGE	SEATPOST WEDGE	-	1	AS A SET
7			PLANTED NUT	-	1	
8	742054	HEADSET KIT	FSA HEADSET HS-PG-01	-	1	AS A SET
			FSA H.SET COMPRESSOR TH-881-1	-	1	
			MICRO SPACER MW024 0.25mm	-	2	
			FSA SMR KIT FOR ROUND STEM	-	1	
9	741330	FRONT HRU AXLE	M12x1.5, L120, T13mm, HEX6	10-16	1	PER PIECE
n/a	737196	SPACER	HEADSET SPACER MW010 5mm	-	1	PER PIECE
n/a	741651	SPACER	HEADSET SPACER MW011 10mm	-	1	PER PIECE
n/a	742250	COLLAR	Di2 BATTERY HOLDER	-	1	AS A SET

STRATTOS C CABLE ROUTING

STRATTOS C Di2

LEGEND

- Front Brake Hose
- Rear Brake Hose
- FD Cable
- RD Cable



STRATTOS C AXS

LEGEND

- Front Brake Hose
- Rear Brake Hose

STRATTOS C GROUPSET PARTS

COMPONENT	SHIMANO PARTS		SRAM PARTS
	STRATTOS C7 DI2	STRATTOS C8 DI2	STRATTOS C9 AXS
BATTERY	BT-DN300		POWERPACK BATTERY
ELECTRIC WIRE	EW-SD300-I 1400mm		-
	EW-SD300-I 800mm		
FRONT DERAILLEUR	FD-R7150	FD-R8150	SRAM FORCE AXS E1
REAR DERAILLEUR	RD-R7150	RD-R8150	SRAM FORCE AXS E1
BRIFTER	ST-R7170	ST-R8170	SRAM FORCE AXS E1
BRAKE	BR-R7170	BR-R8170	SRAM FORCE AXS E1
ROTOR	RT-CL700 160mm	RT-CL800 160mm	RT-PACELINE-A2 160mm
CHAINWHEEL	FC-R7100	FC-R8100	SRAM FORCE AXS E1
CASSETTE	CS-R7101	CS-R8101	SRAM XG-1270 FORCE
CHARGING CABLE	EW-EC300 1500mm		EP-EAC-PP-A1

For further reference, please access the groupset owner's manual by scanning the QR code below.



**SHIMANO DI2
MANUAL**



**SRAM AXS
MANUAL**

STRATTOS C

REGULAR INSPECTION

REGULAR INSPECTIONS BEFORE RIDING THE BICYCLE

Before riding the bicycle, check the following items. If any problems are found, consult your place of purchase or a distributor.

☐

Does the drive train perform gear shifting smoothly?

☐

Are the components securely installed to the frame/ handlebar/ stem, etc.?

☐

Is there sufficient charge remaining in the battery?

☐

Is there any looseness or damage in the component parts?

☐

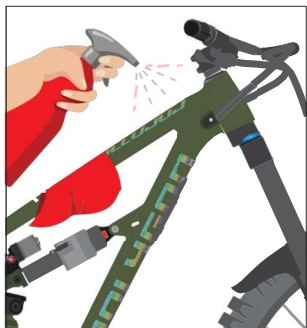
Do any abnormal noises occur while riding?

AVOID

Avoid wearing clothing that may get caught in a chain or wheel, as this may cause an accident.

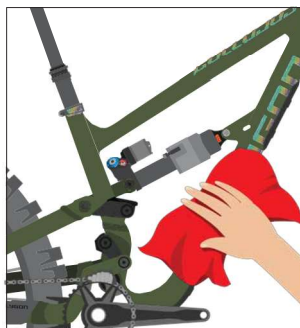
STRATTOS C

HOW TO CLEAN THE BIKES



1

Use a bike wash or wet cloth to clean up every part of your bike. Preferably using a specific cleaner for the bike



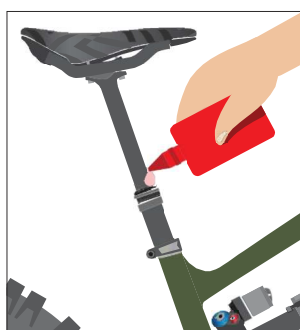
2

Wipe the bike immediately until it's dry. Do not leave it in wet conditions for a long time.



3

Clean up the drivetrain with a clean and dry cloth.



4

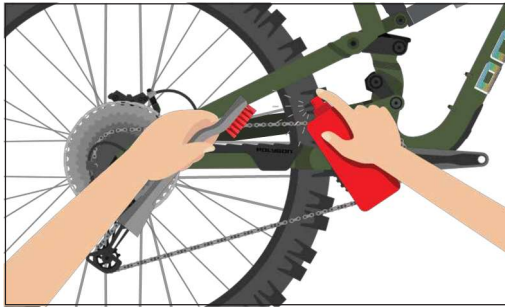
Check and lubricate every component if needed, especially 2 or more components that rub against each other, such as the seat post, bottom bracket, hub, pivot frame suspension, ect

NOTE

- Use the right bike wash to make sure your every bike component and frame is safe.
- Avoid washing the bike using high - pressure water
- It is highly recommended to use specific lubricants for bicycle parts, not with engine vehicles or other oil since it might lead to component performance reduction
- It is recommended to use a bike cleaner rather than detergent, solvent like acetone, and thinner to clean the bike parts.

STRATTOS C

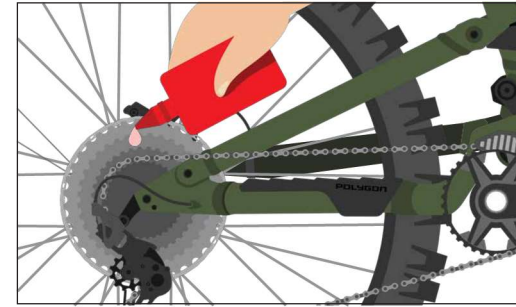
HOW TO CLEAN THE BIKE'S CHAIN

**1**

Use a bike chain cleaner and gently brush it.

**2**

Wipe with a clean and dry cloth, and let it dry for minutes.

**3**

Lube the chain regularly

POLYGON

OWNER MANUAL