

# POLYGON

OWNER MANUAL





KALOSI LANES EVO



KALOSI LANES EVO BOSCH  
HIGH-STEP



KALOSI LANES EVO



KALOSI LANES EVO BOSCH  
LOW-STEP

# CONGRATULATIONS!

Congratulations for buying Polygon Bikes! A bicycle is a great tool for transportation and recreation. Hopefully, you can find enjoyment and have a great deal of use in every ride. This manual contains important information which includes safety, performance, and maintenance.

**IMPORTANT**

Read this manual before taking your first ride and use it for future reference as well.

Additional safety, performance, and service information related to specific components such as suspension, pedals, and other accessories, such as helmets or lights you have purchased. Make sure your nearest authorized dealer has given all the manufacturing literature which includes in your bicycle and accessories. In case of conflict between the instructions and information provided in this manual, always follow the component manufacturer's instructions.

If you have any questions or do not understand something within this guide, take responsibility for your safety and consult with your nearest authorized dealer or the bicycle's manufacturer.

**NOTE**

This manual is not intended for comprehensive use, service repair, or service manual. Please see your nearest authorized dealer for all service, repairs, and maintenance-related action. Your dealer is also able to refer you to classes, clinics, or books for service or maintenance.

**WARNING**

To ensure the warranty of your bicycle, be sure to only use the original spare parts.

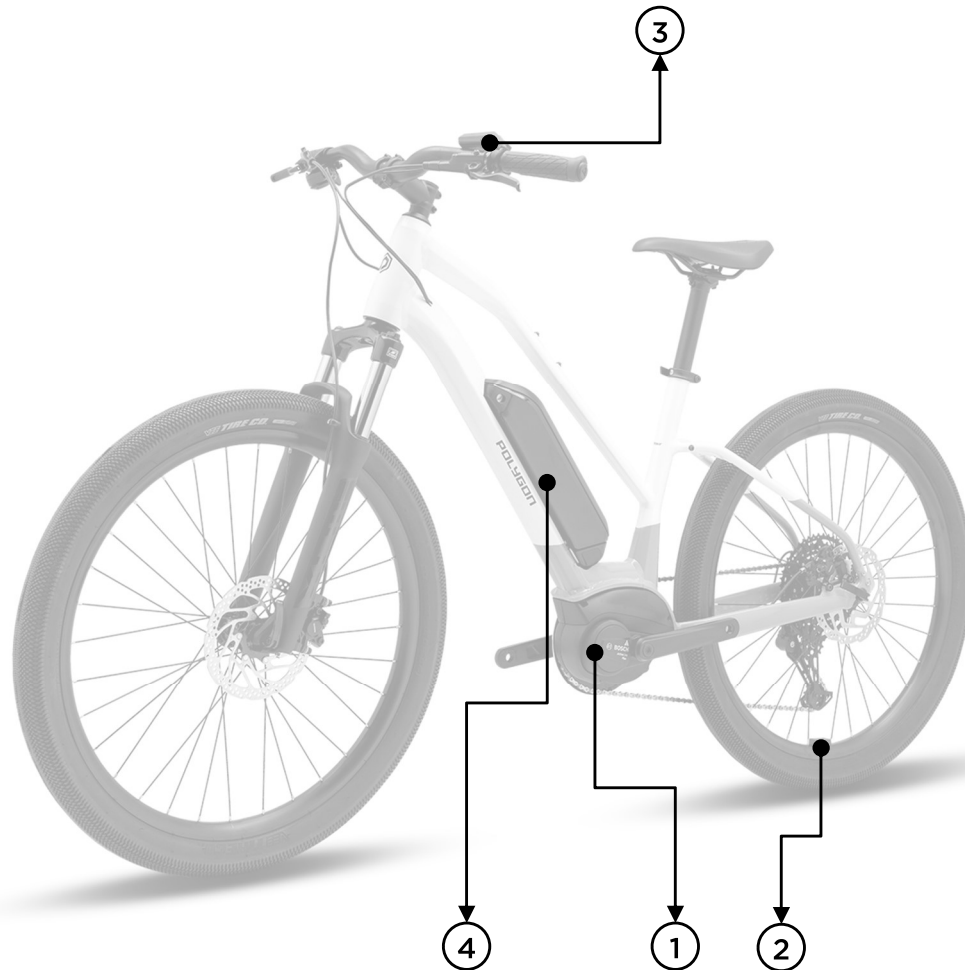
**KALOSI LANES EVO BOSCH**  
TABLE OF CONTENT

<b>01</b>	INTRODUCTION
<b>02</b>	TABLE OF CONTENT
<b>03</b>	FRAME PARTS
<b>04</b>	ELECTRICAL PARTS
<b>07</b>	POWERPACK BATTERY OVERVIEW
<b>08</b>	ELECTRICAL PART WIRING
<b>09</b>	REGULAR INSPECTION
<b>10</b>	HOW TO CLEAN THE BIKE
<b>11</b>	HOW TO CLEAN THE BIKE'S CHAIN

**KALOSI LANES EVO BOSCH**  
FRAME PARTS

PART	ARTICLE	ITEM	ITEM DETAILS	TORQUE (N.m)	QTY / FRAME	SOLD
n/a	742015	GROMMET	RUBBER GROMMET SNAP IN PLUG FOR 4MM HOLE	-	4	PER 4 PIECES
n/a	733072	DROP OUT	DROP OUT IS18PHG02 W/BOLT	5	1	PER PIECE
n/a	n/a	BOSCH DRIVE UNIT COVER	DESIGN COVER RIGHT/BOTTOM EB11.200.03V	-	1	
n/a	n/a		DESIGN COVER RIGHT/TOP EB11.200.03W	-	1	n/a
			COVER LEFT BCM (BOTTOM/TOP) EB11.200.03X	-	1	

**KALOSI LANES EVO BOSCH**  
ELECTRICAL PARTS



**ELECTRICAL PART MANUAL GUIDE**

Check the link or scan the QR code to see how to operate the electrical part of Kalosi Lanes Evo Bosch



**BOSCH  
ACTIVE LINE PLUS  
MANUAL GUIDE**



**BOSCH  
BATTERY CHARGER  
MANUAL GUIDE**



**BOSCH  
POWERPACK FRAME  
545 WH  
MANUAL GUIDE**



**PURIION 200  
BRC3800  
MANUAL GUIDE**



**POLYGON  
PELELEC  
OWNER MANUAL**

**KALOSI LANES EVO BOSCH**  
ELECTRICAL PARTS

NO	ITEM	QTY	KALOSI LANES EVO BOSCH (EU)	KALOSI LANES EVO BOSCH (ID)
1	DRIVE UNIT COMPONENTS	3	NUT M8 2915.068.005	
		2	SCREW M4X53,5 1270.016.420	
		2	SCREW M6X16 1270.016.426	
		2	SCREW M4X10 1270.016.431	
		3	SCREW M8X60 2911.029.258	
		3	WASHER 2916.011.164	
		1	DRIVE UNIT ACTIVE LINE PLUS EB11.100.008	
		1	O-RING 1270.016.107	
		1	LOCKRING 1270.016.489	
		1	MOUNTING PLATE EB11.200.03R	
		1	COVER EB11.200.03V RIGHT/BOTTOM	
		1	COVER EB11.200.03W RIGHT/TOP	
		1	COVER EB11.200.03X LEFT BCM	
		1	STICKER LOGO EB11.200.01L	
2	RIM MAGNET SPEEDSENSOR	1	RIM MAGNET SPEEDSENSORS EB11.200.015	
		1	SLEEVE RIM MAGNET EB11.200.02S	
3	REMOTE	1	REMOTE EB13.200.03V BRC3800 PURION 200	
n/a	HMI CABLE	1	DISPLAY HMI CABLE EB12.120.02L	

**KALOSI LANES EVO BOSCH**  
ELECTRICAL PARTS

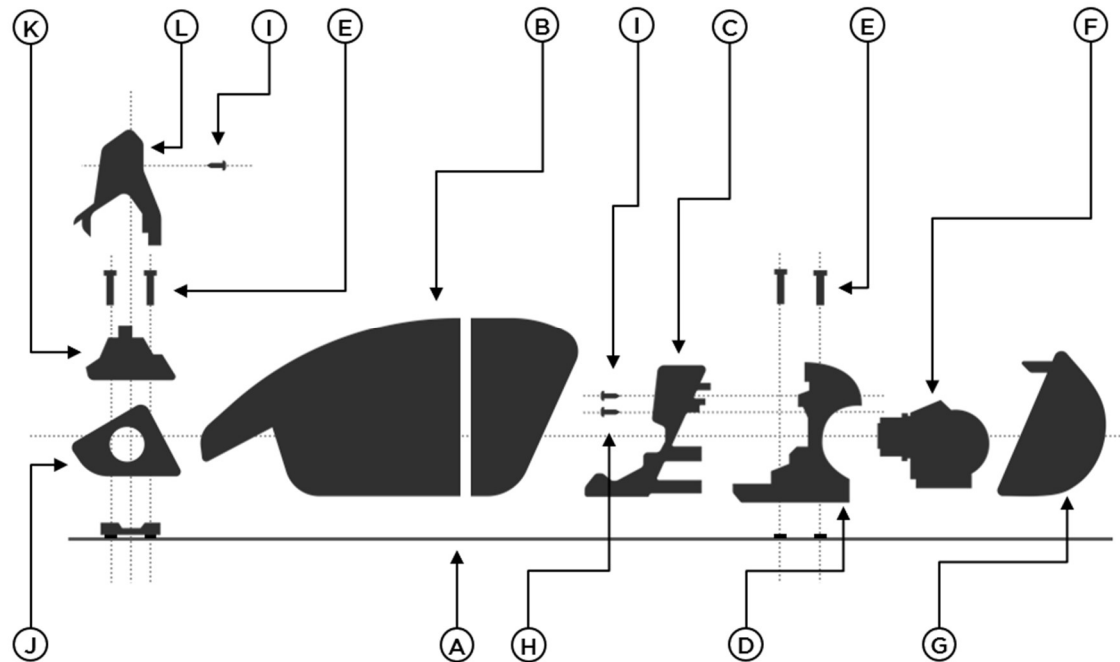
NO	ITEM	QTY	KALOSI LANES EVO BOSCH (EU)	KALOSI LANES EVO BOSCH (ID)
4	BATTERY COMPONENTS	1	BATTERY POWER PACK EB12.100.04M 545 (EU)	
		2	SCREW M3,5X12 1270.016.417	
		2	SCREW M3.5X12 1270.016.418	
		1	BATTERY ADAPTER EB12.100.014	
		4	SCREW M5X20 EB12.200.01B	
		1	LOCK HOUSING BOTTOM EB12.200.01C	
		1	LOCK HOUSING TOP EB12.200.01D	
		1	BEARING COVER EB12.200.03H	
		1	FIXING PLATE EB12.200.03J	
		1	HOLDING PLATE EB12.200.0AR	
		1	CONNECTOR COVER EB12.200.0C7	
		1	PIN PROTECTION EB12.200.0K4	
n/a	BATTERY CABLE	1	BATTERY CABLE 250MM EB12.120.02N	
n/a	BATTERY CHARGER	1	BATTERY CHARGER EB12.110.001 4A 230V (EU)	
n/a	POWER CABLE	1	POWER CABLE 1270.020.330 EU	

KALOSI LANES EVO BOSCH

POWERPACK BATTERY OVERVIEW

**WARNING**

The installation of electrical components must only be performed by an authorized Polygon Bikes dealer. Damage to components resulting from incorrect installation may void the warranty on those components.



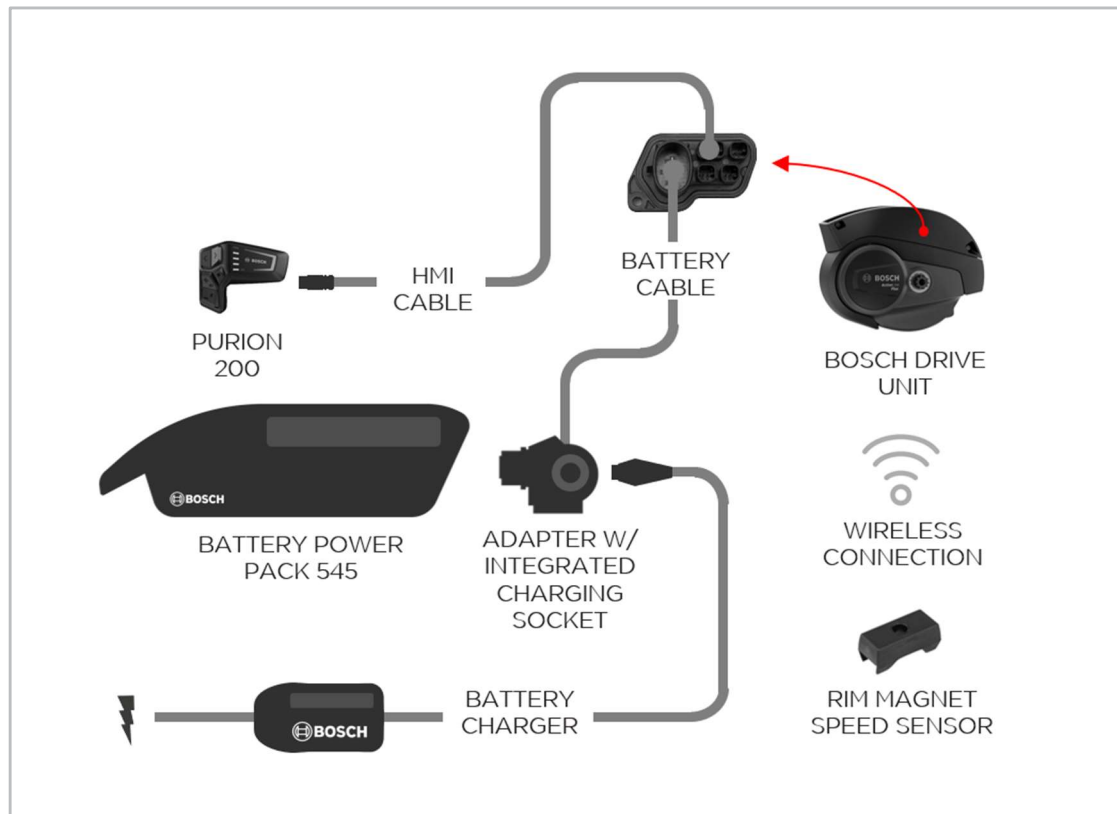
BOSCH  
POWERPACK BATTERY  
COMPONENTS

ITEM	ITEM DETAIL	QTY
A	FRAME (DOWNTUBE)	1
B	POWERPACK BATTERY	1
C	HOLDING PLATE	1
D	FIXING PLATE	1
E	SCREW M5x20	4
F	BATTERY ADAPTER	1
G	BEARING COVER	1
H	SCREW M3.5x12	2
I	SCREW M3.5x12	2
J	LOCK HOUSING BOTTOM	1
K	LOCK	1
L	LOCK HOUSING TOP	1

**KALOSI LANES EVO BOSCH**  
ELECTRICAL PART WIRING

**WARNING**

The installation of electrical components must only be performed by an authorized Polygon Bikes dealer. Damage to components resulting from incorrect installation may void the warranty on those components.



## KALOSI LANES EVO BOSCH

### REGULAR INSPECTION

#### REGULAR INSPECTIONS BEFORE RIDING THE BICYCLE

Before riding the bicycle, check the following items. If any problems are found, consult your place of purchase or a distributor.

Does the drive train perform gear shifting smoothly?

Are the components securely installed to the frame/ handlebar/ stem, etc.?

Is there sufficient charge remaining in the battery?

Is there any looseness or damage in the component parts?

Do any abnormal noises occur while riding?

**AVOID**

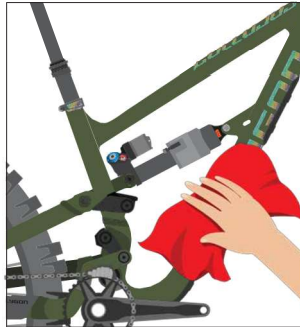
Avoid wearing clothing that may get caught in a chain or wheel, as this may cause an accident.

**KALOSI LANES EVO BOSCH**  
HOW TO CLEAN THE BIKES



**1**

Use a bike wash or wet cloth to clean up every part of your bike. Preferably using a specific cleaner for the bike



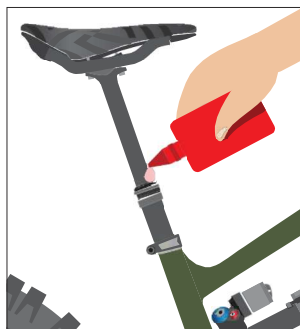
**2**

Wipe the bike immediately until it's dry. Do not leave it in wet conditions for a long time.



**3**

Clean up the drivetrain with a clean and dry cloth.



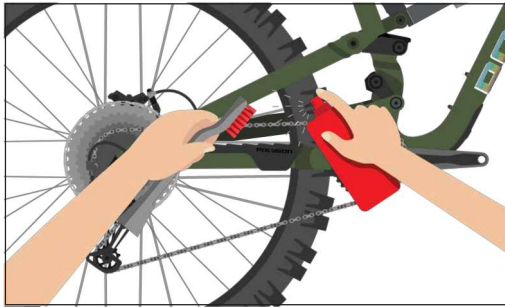
**4**

Check and lubricate every component if needed, especially 2 or more components that rub against each other, such as the seat post, bottom bracket, hub, pivot frame suspension, ect

**NOTE**

- Use the right bike wash to make sure your every bike component and frame is safe.
- Avoid washing the bike using high - pressure water
- It is highly recommended to use specific lubricants for bicycle parts, not with engine vehicles or other oil since it might lead to component performance reduction
- It is recommended to use a bike cleaner rather than detergent, solvent like acetone, and thinner to clean the bike parts.

**KALOSI LANES EVO BOSCH**  
HOW TO CLEAN THE BIKE'S CHAIN



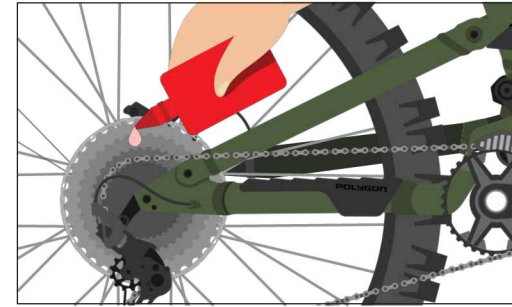
**1**

Use a bike chain cleaner and gently brush it.



**2**

Wipe with a clean and dry cloth, and let it dry for minutes.



**3**

Lube the chain regularly

# **POLYGON**

**OWNER MANUAL**