

POLYGON

OWNER MANUAL





SISKIU T



SISKIU T8



SISKIU T



SISKIU T7



SISKIU T



SISKIU T6

CONGRATULATIONS!

Congratulations for buying Polygon Bikes! A bicycle is a great tool for transportation and recreation. Hopefully, you can find enjoyment and have a great deal of use in every ride. This manual contains important information which includes safety, performance, and maintenance.

IMPORTANT

Read this manual before taking your first ride and use it for future reference as well.

Additional safety, performance, and service information related to specific components such as suspension, pedals, and other accessories, such as helmets or lights you have purchased. Make sure your nearest authorized dealer has given all the manufacturing literature which includes in your bicycle and accessories. In case of conflict between the instructions and information provided in this manual, always follow the component manufacturer's instructions.

If you have any questions or do not understand something within this guide, take responsibility for your safety and consult with your nearest authorized dealer or the bicycle's manufacturer.

NOTE

This manual is not intended for comprehensive use, service repair, or service manual. Please see your nearest authorized dealer for all service, repairs, and maintenance-related action. Your dealer is also able to refer you to classes, clinics, or books for service or maintenance.

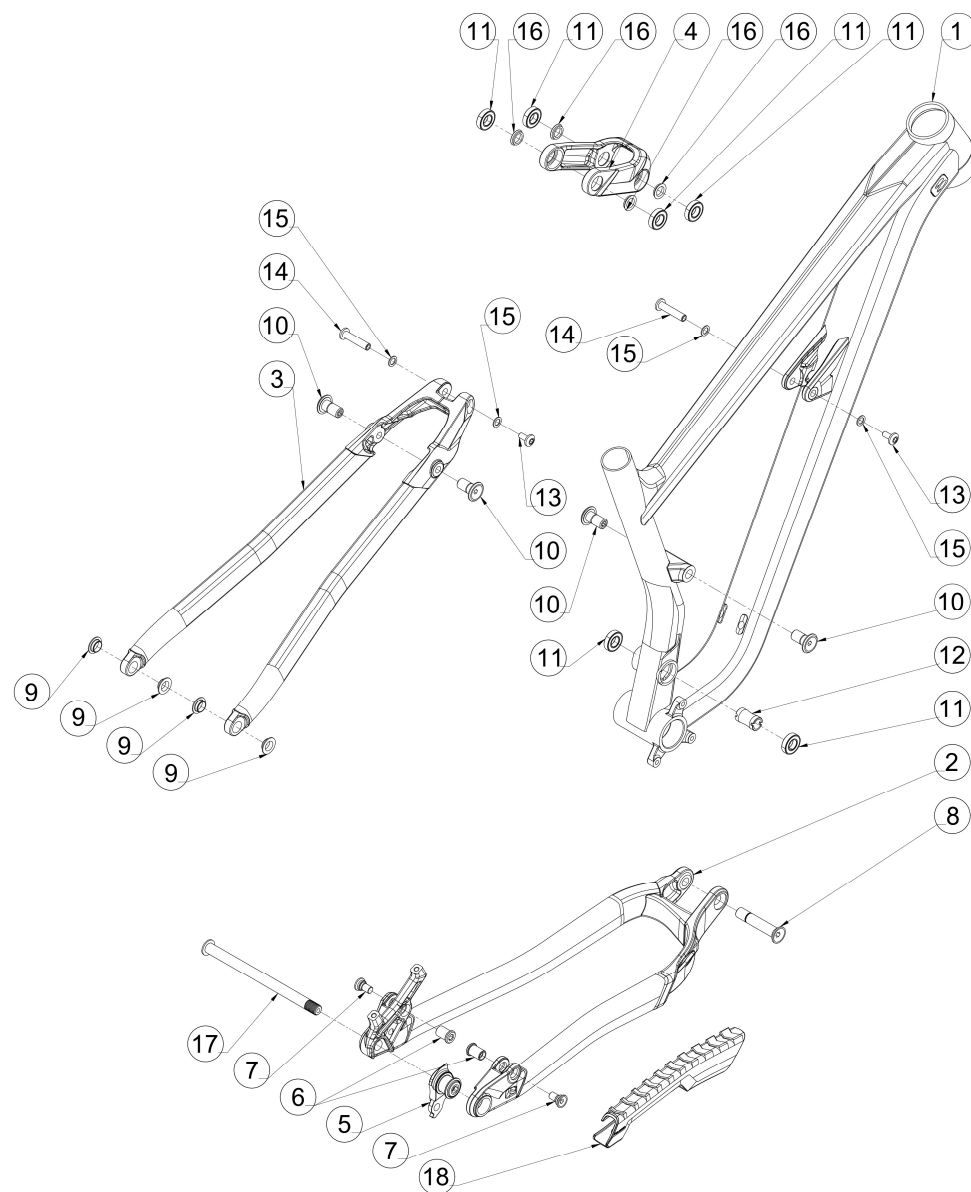
WARNING

To ensure the warranty of your bicycle, be sure to only use the original spare parts.

SISKIUT
TABLE OF CONTENT

01	INTRODUCTION
02	TABLE OF CONTENT
03	EXPLODED VIEW
04	FRAME KITS
05	REGULAR INSPECTION
06	HOW TO CLEAN THE BIKE
07	HOW TO CLEAN THE BIKE'S CHAIN

SISKIU T
EXPLODED VIEW



SISKIU T
FRAME KITS

PART	ARTICLE	ITEM	ITEM DETAILS	TORQUE (N.m)	QTY / FRAME	SOLD
4	728715	UPPER LINK	UPPER LINK FOR SISKIU T	-	1	PER PIECE
5	738268	UDH	UNIVERSAL DERAILLEUR HANGER	25	1	PER PIECE
6	732527	REAR S/S BOLT AND NUT SET	PIVOT SHAFT M8X1.25, L19, T9.5, HEX6	12	2	AS A SET
7			PIVOT BOLT M8X1.25, L18, T9.75, HEX5	12	2	
9			BEARING 12X24X5mm	-	4	
8	733646	LOWER PIVOT BOLT SET	PIVOT SHAFT M12X1.25, L69.5, HEX5	15	1	AS A SET
12			PIVOT SPACER ID12, OD14.5, L32mm	-	1	
10	732531	UPPER LINKAGE BOLT SET	PIVOT SHAFT M12X1.25, L26.5, T16.2, HEX5	15	4	AS A SET
16			PIVOT RING SPACER ID12, OD16, L3	-	4	
11	728711	SEALED BEARING	SEALED BEARING 69012RS ID12, OD24, L6mm	-	6	PER PIECE
13	741688	SHOCK BOLT SET	PIVOT BOLT M6x1.0, L18, T9.5, HEX5	12	2	AS A SET
14			PIVOT BOLT FEMALE M6x1.0, L41, T30, HEX6	12	2	
15			WASHER ID8, OD12.5, L18mm	-	4	
17	741389	REAR THRU AXLE	REAR THRU AXLE M12x1.0, L174, T16.5, HEX5	11	1	PER PIECE
18	733647	CS PROTECTOR	CHAINSTAY PROTECTOR FOR SISKIU T/D	-	1	PER PIECE

SISKIU T

REGULAR INSPECTION

REGULAR INSPECTIONS BEFORE RIDING THE BICYCLE

Before riding the bicycle, check the following items. If any problems are found, consult your place of purchase or a distributor.

☐

Does the drive train perform gear shifting smoothly?

☐

Are the components securely installed to the frame/ handlebar/ stem, etc.?

☐

Is there sufficient charge remaining in the battery?

☐

Is there any looseness or damage in the component parts?

☐

Do any abnormal noises occur while riding?

AVOID

Avoid wearing clothing that may get caught in a chain or wheel, as this may cause an accident.

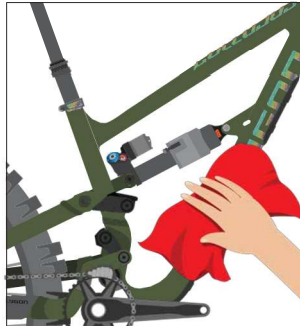
SISKIU T

HOW TO CLEAN THE BIKES



1

Use a bike wash or wet cloth to clean up every part of your bike. Preferably using a specific cleaner for the bike



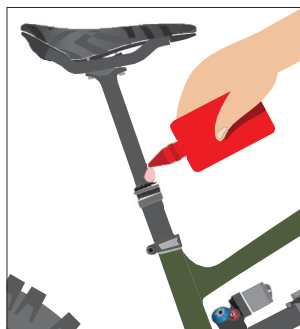
2

Wipe the bike immediately until it's dry. Do not leave it in wet conditions for a long time.



3

Clean up the drivetrain with a clean and dry cloth.



4

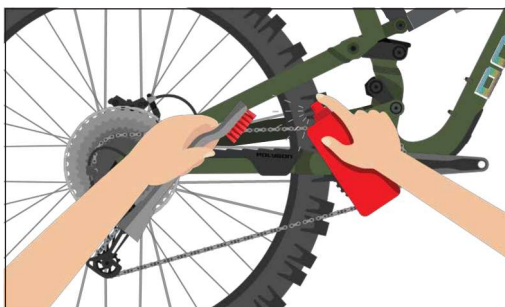
Check and lubricate every component if needed, especially 2 or more components that rub against each other, such as the seat post, bottom bracket, hub, pivot frame suspension, ect

NOTE

- Use the right bike wash to make sure your every bike component and frame is safe.
- Avoid washing the bike using high - pressure water
- It is highly recommended to use specific lubricants for bicycle parts, not with engine vehicles or other oil since it might lead to component performance reduction
- It is recommended to use a bike cleaner rather than detergent, solvent like acetone, and thinner to clean the bike parts.

SISKIUT

HOW TO CLEAN THE BIKE'S CHAIN



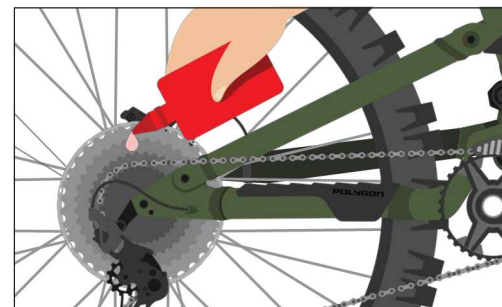
1

Use a bike chain cleaner and gently brush it.



2

Wipe with a clean and dry cloth, and let it dry for minutes.



3

Lube the chain regularly

POLYGON

OWNER MANUAL