



POLYGON

POLYGONBIKES.COM



BICYCLE OWNER'S MANUAL

COLLOSUS ⁷⁹

CONGRATULATIONS!

Congratulations for buying Polygon Bikes! A bicycle is a great tool for transportation and recreation. Hopefully, you can find enjoyment and have a great deal of use in every ride. This manual contains important information which includes safety, performance, and maintenance.



IMPORTANT

Read this manual before taking your first ride and use it for future reference as well.

Additional safety, performance, and service information related to specific components such as suspension; pedals; and other accessories, such as helmets or lights you have purchased. Make sure your nearest authorized dealer has given all the manufacturing literature which includes in your bicycle and accessories. In case of conflict between the instructions and information provided in this manual, always follow the component manufacturer's instructions.

If you have any questions or do not understand something within this guide, take responsibility for your safety and consult with your nearest authorized dealer or the bicycle's manufacturer.

NOTE

This manual is not intended for comprehensive use, service repair, or service manual. Please see your nearest authorized dealer for all service, repairs, and maintenance-related action. Your dealer is also able to refer you to classes, clinics, or books for service or maintenance.

WARNING

To ensure the warranty of your bicycle, be sure to only use the original spare parts.

CONTENT

01 | INTRODUCTION

02 | TABLE OF CONTENT

03 | EXPLODED VIEW

04 | FRAME KITS

06 | CHAINSTAY ASSEMBLY
SEATSTAY ASSEMBLY

07 | SHOCK & ACCESSORIES
ASSEMBLY

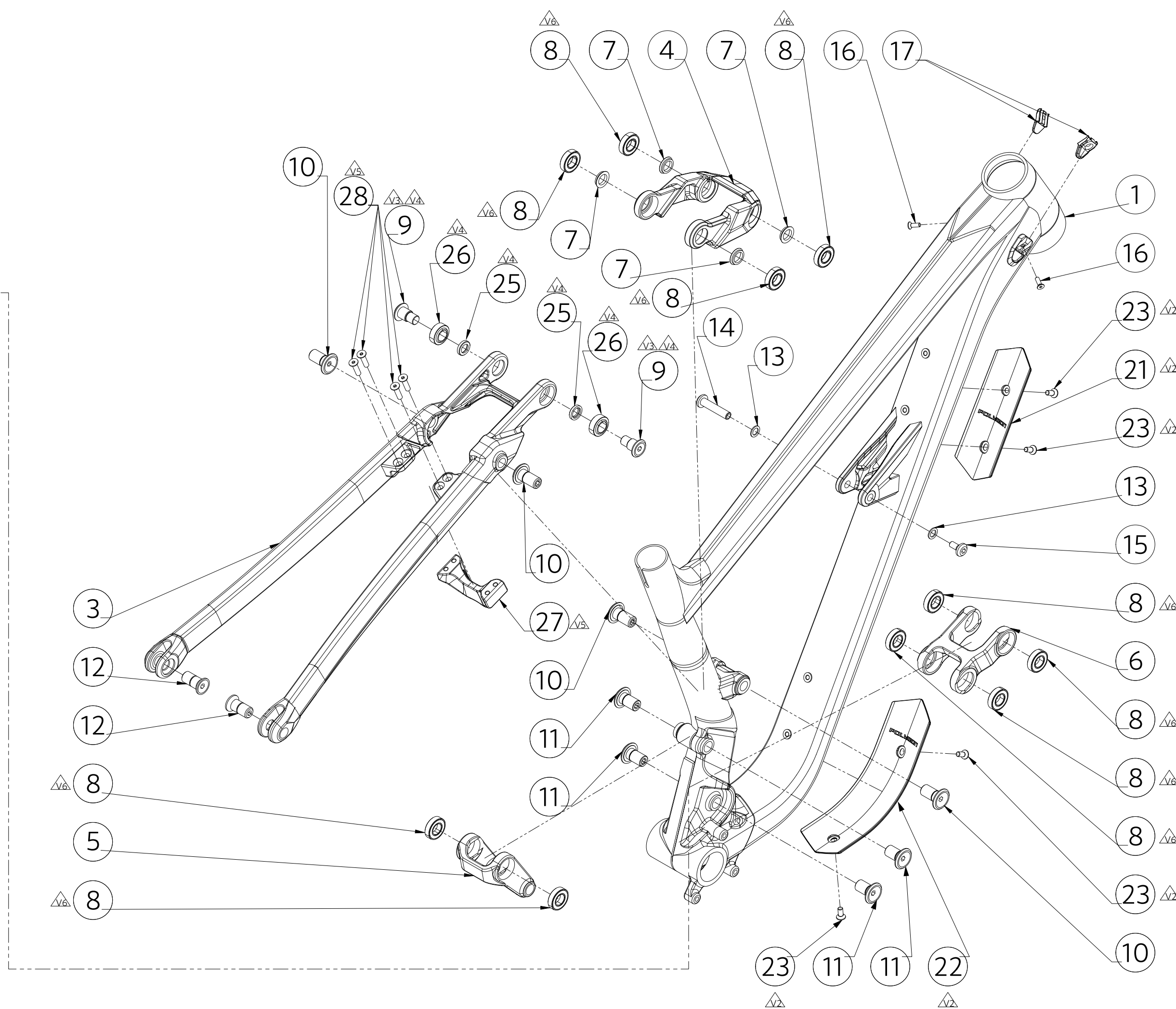
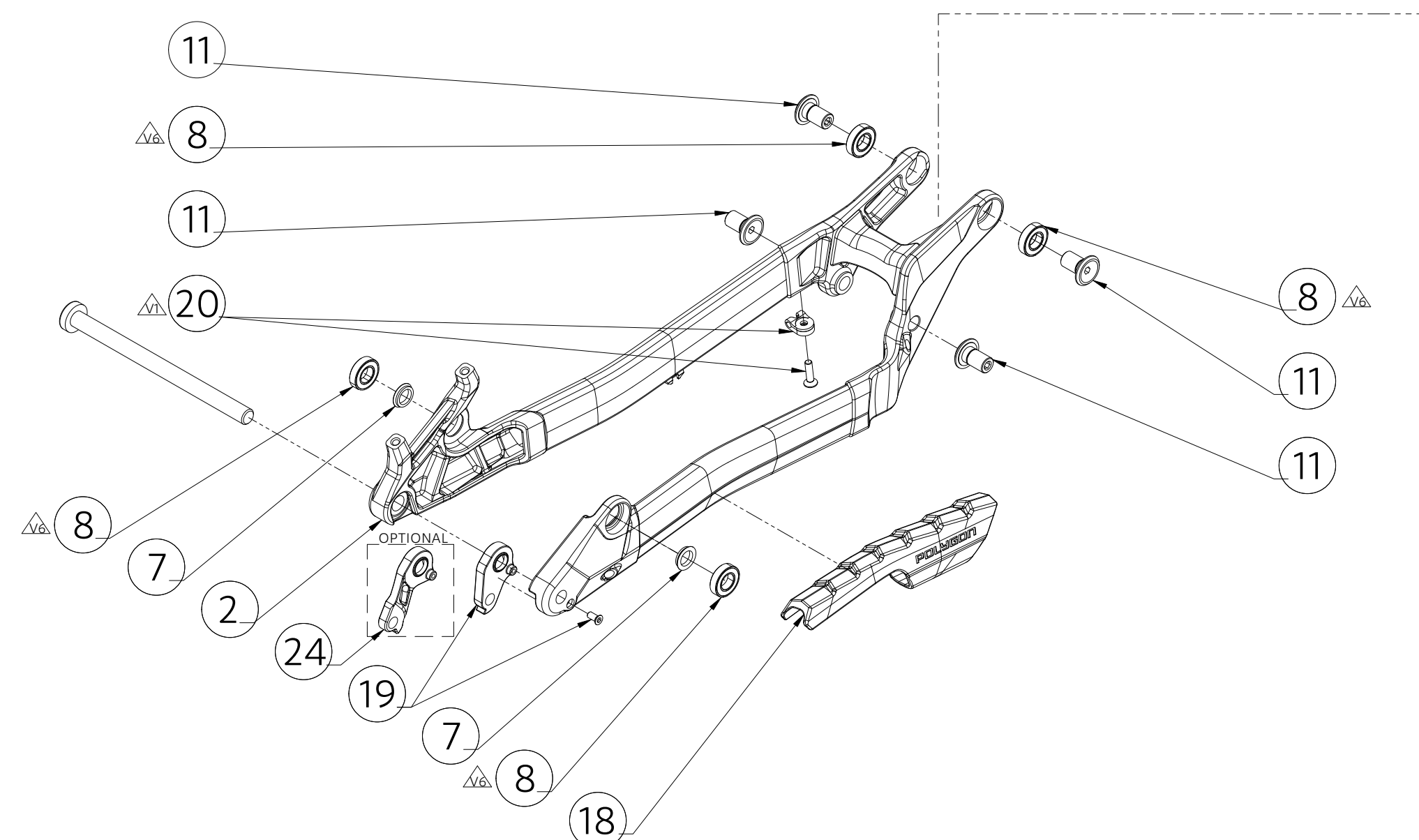
SHOCK PRESSURE
RECOMENDATION

08 | CABLE ROUTING

09 | HOW TO CLEAN THE BIKE

10 | HOW TO MAINTAIN
THE BIKE'S CHAIN

BICYCLE PARTS EXPLODED VIEW



COLLOSUS N IFS - FRAME KITS

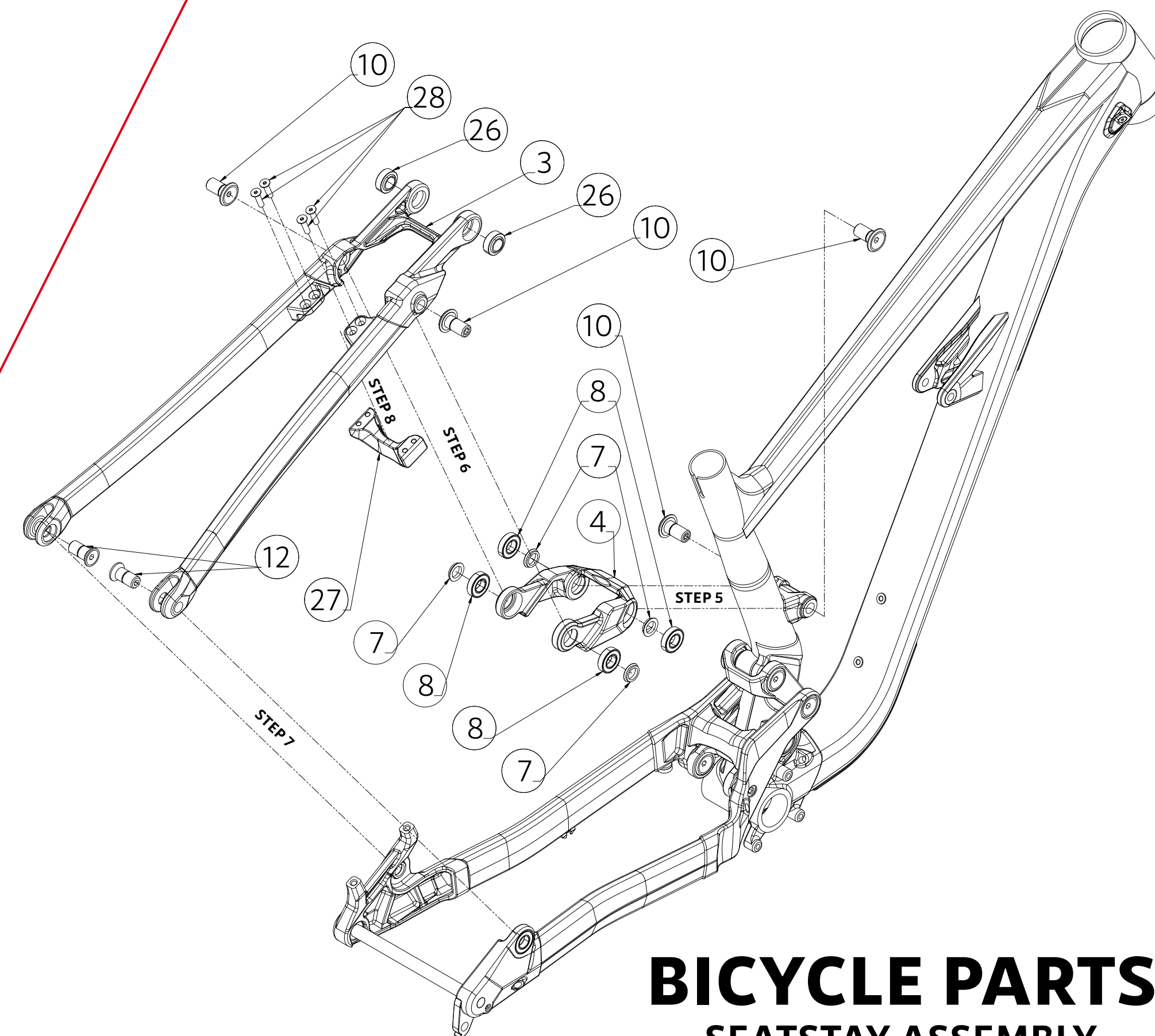
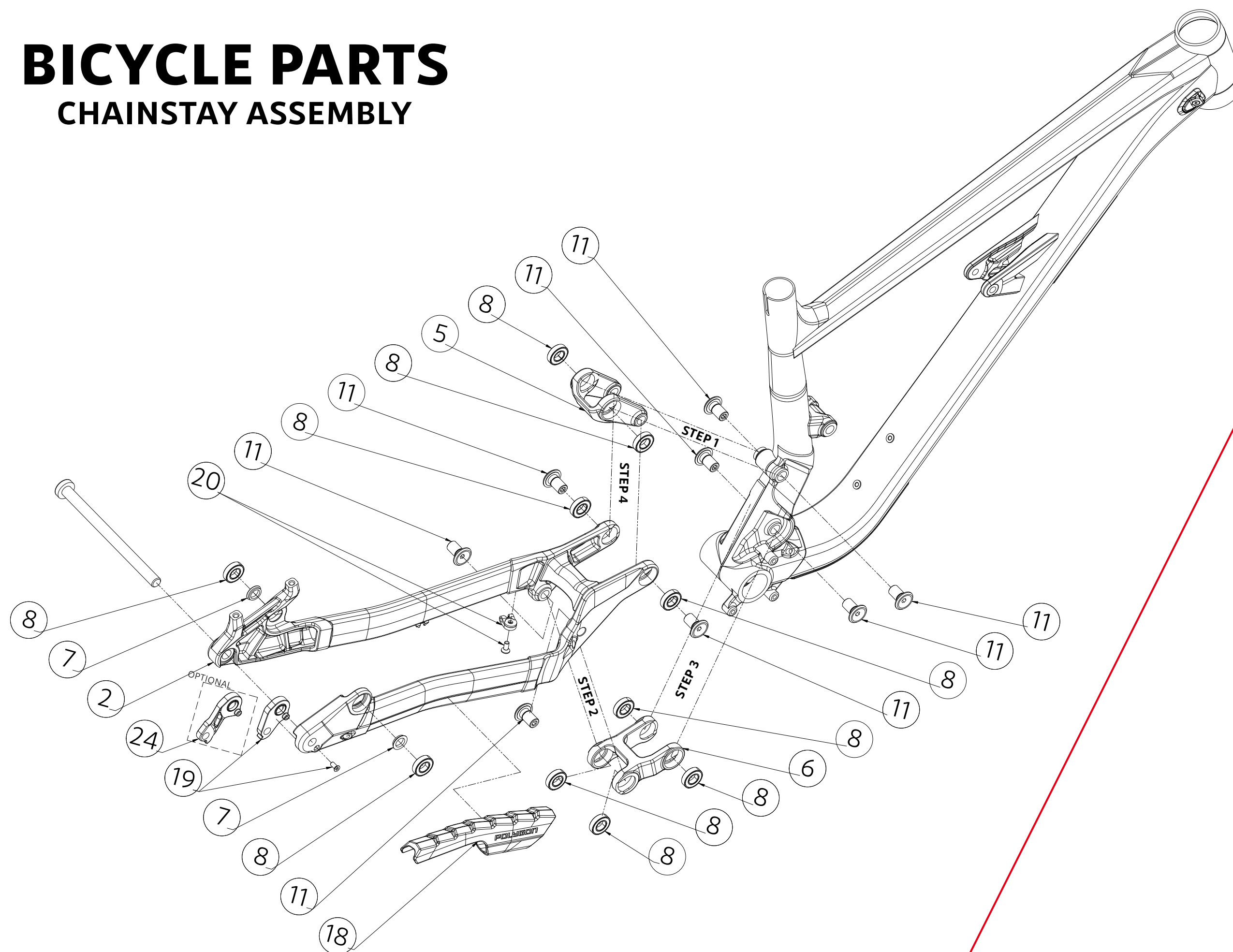
ARTICLE CODE	PART #	ITEM	ITEM DETAILS	TORQUE (N.m)	QTY / FRAME	SOLD
736039	4	SHOCK LINK SISKIU N IFS	IS21PFK05	-	1	PER PIECE
736040	5	SECOND LINK SISKIU N IFS	IS21PFK04	-	1	PER PIECE
736041	6	FIRST LINK SISKIU N IFS	IS21PFK03	-	1	PER PIECE
735301	7	BEARING SPACER IS16PFK18	ID12, OD16, L3	-	6	PER 4 PIECES
733710	8	SEALED BEARING 6901V2RS 12x24x6mm	SEALED BEARING 6901V2RS 12x24x6mm	-	14	PER 2 PIECES
736871	9	TRUNNION BOLT FOR SPHERICAL BEARING	IS22PFK03 M10X1.0, L23.5, T9.5, HEX5	12	2	PER 2 PIECES
735298	10	PIVOT BOLT IS16PFK19	M12X1.25, L26.5, T16.2, HEX5	20	4	PER 2 PIECES
736038	11	PIVOT BOLT IS21PFK07	M12X1.25, L23, T14.7, HEX5	20	8	PER 2 PIECES
735299	12	REAR PIVOT BOLT IS17PFK32	M12X1.25, L26, T12, HEX5	20	2	PER 2 PIECES
733713	13	REAR SHOCK BOLT & NUT SET	WASHER ID8, OD12.5	-	2	AS A SET
	14		SHAFT IS17PFK05 8XM6X1.0, L41, T30, HEX6	12	1	
	15		BOLT IS16FMS03 M6X1.0, L18, T9.5, HEX5	12	1	
729761	16	CABLE PORT SET	BOLT M4X0.7, L12, HEX2.5	4	2	AS A SET
	17		CABLE PORT	-	2	

COLLOSUS N IFS - FRAME KITS

ARTICLE CODE	PART #	ITEM	ITEM DETAILS	TORQUE (N.m)	QTY / FRAME	SOLD
736043	18	CHAIN STAY PROTECTOR SISKIU N IFS	IS21PFK02F0	-	1	PER PIECE
725047	19	2HRU DROP OUT DIRECT ATTACH	IS15PHG01	1	1	PER PIECE
736045	20	CABLE GUIDE W/ BOLT	611-024-050 W/ BOLT M5X0.8, L16, HEX3	6	1	PER PIECE
736520	21	DOWN TUBE SHUTTLE PAD SET	IS21PFK33 - KRATON RUBBER W/ 3M DOUBLE SIDED TAPE	-	1	AS A SET
	23		M5X0.8, L12, HEX3	6	2	
736522	22	DOWN TUBE PROTECTOR SET	IS21PFK34 - KRATON RUBBER W/ 3M DOUBLE SIDED TAPE	-	1	AS A SET
	23		M5X0.8, L12, HEX3	6	2	
728308	24	2HRU DROP OUT DIRECT MOUNT	IS17PHG01	1	1	PER PIECE
736872	25	TRUNNION BOLT SPACER FOR SPHERICAL BEARING	IS22PFK06 ID12 ID10, OD16, L3	-	2	PER 2 PIECES
736870	26	SPHERICAL BEARING 12x22x10x7mm	1R-GE12C-C3	-	2	PER 2 PIECES
737293	27	SECOND S/S BRIDGE	IS22PFK29	-	1	AS A SET
	28		M5X0.8, L20, HEX3	7	4	
728713	n/a	2HRU AXLE 12x148	M12X1.5, L174, T20, HEX6	10-12.5	1	PER PIECE

BICYCLE PARTS

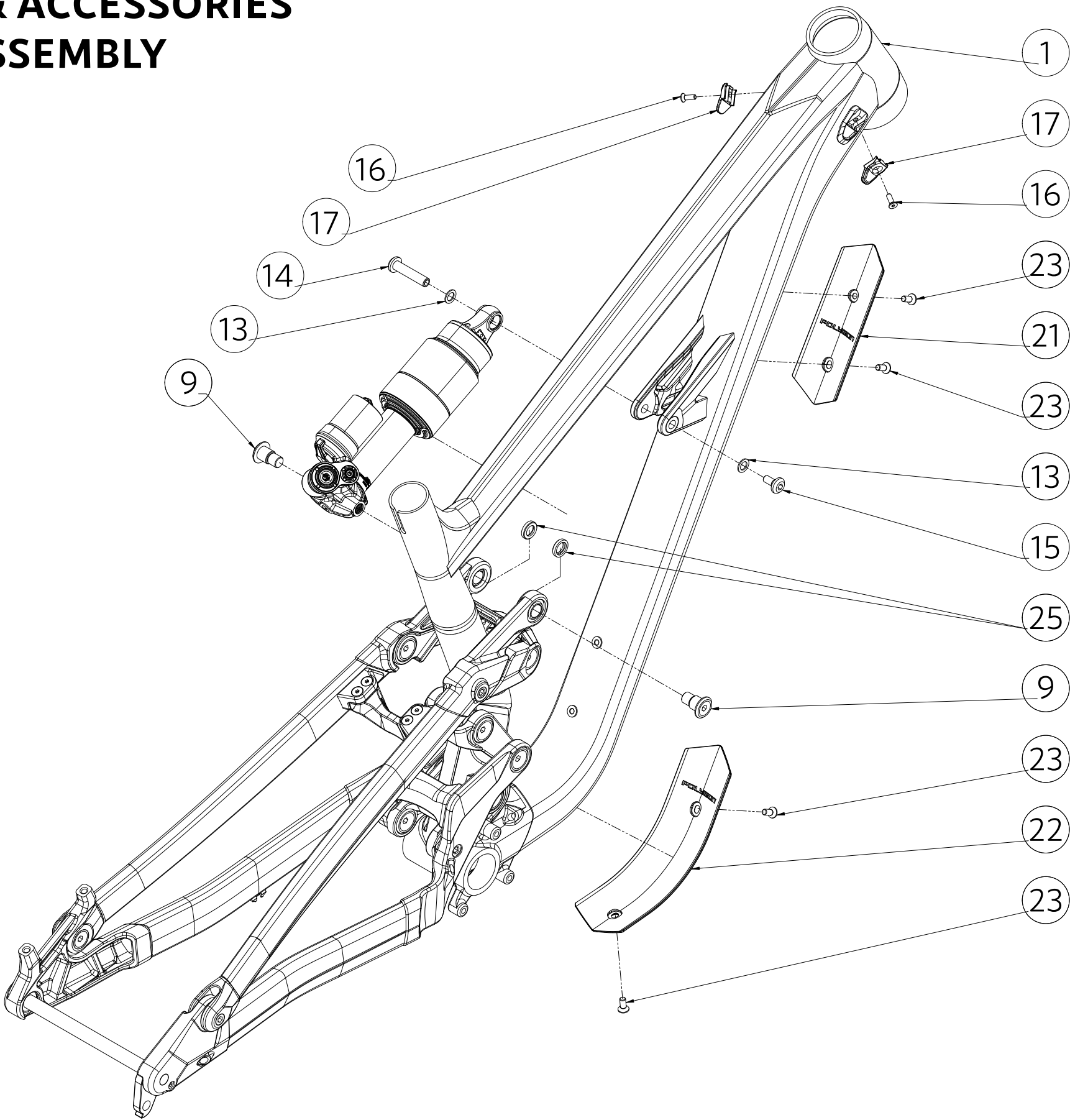
CHAINSTAY ASSEMBLY



BICYCLE PARTS

SEATSTAY ASSEMBLY

BICYCLE PARTS
SHOCK & ACCESSORIES
ASSEMBLY






SHOCK PRESSURE RECOMENDATION
30% SAG

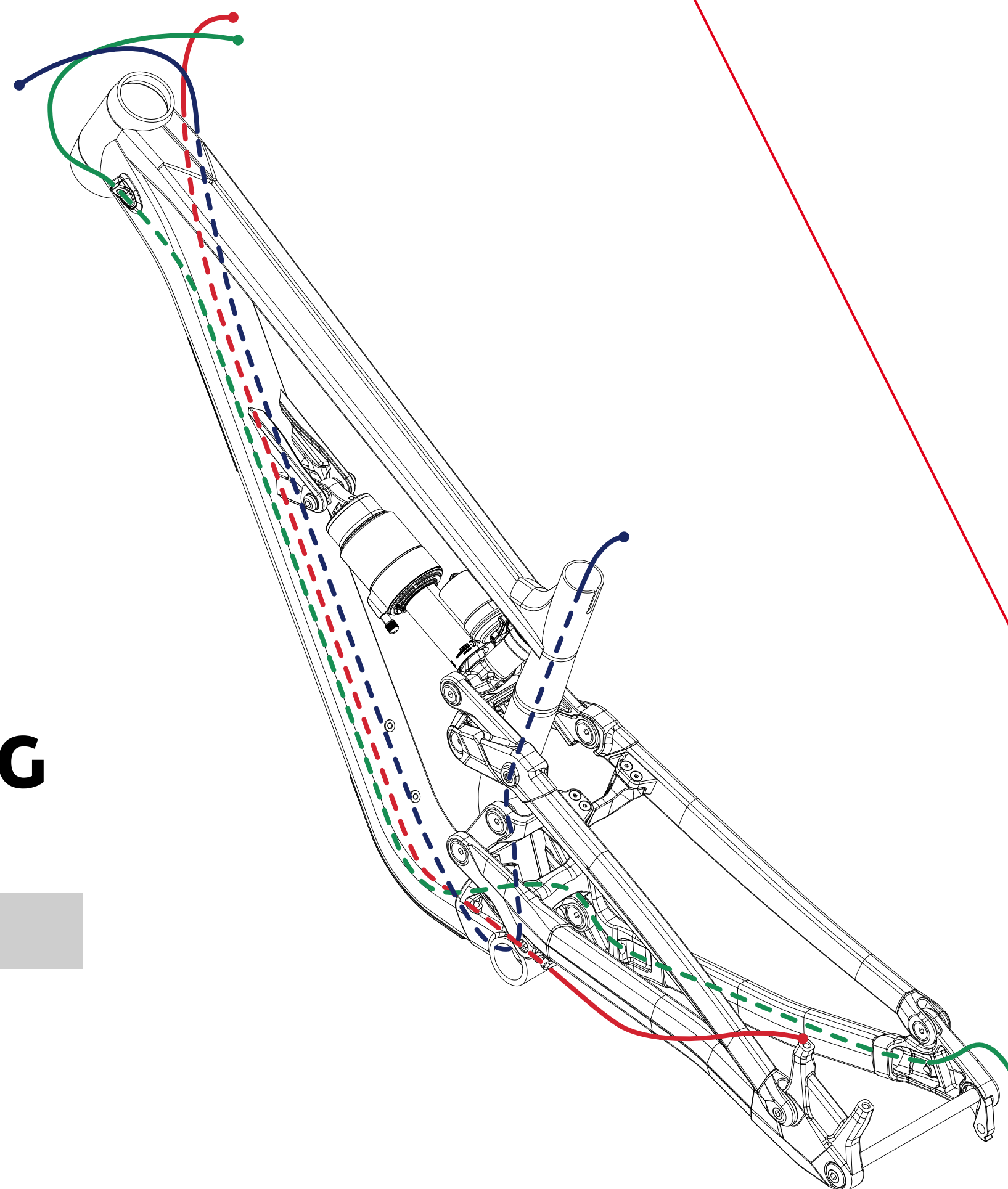
RIDER WEIGHT (KG)	SHOCK PRESSURE (PSI)
50	124
55	136
60	147
65	158
70	170
75	181
80	192
85	203
90	215
95	226
100	237
105	249

CABLE ROUTING

REAR BRAKE LEFT

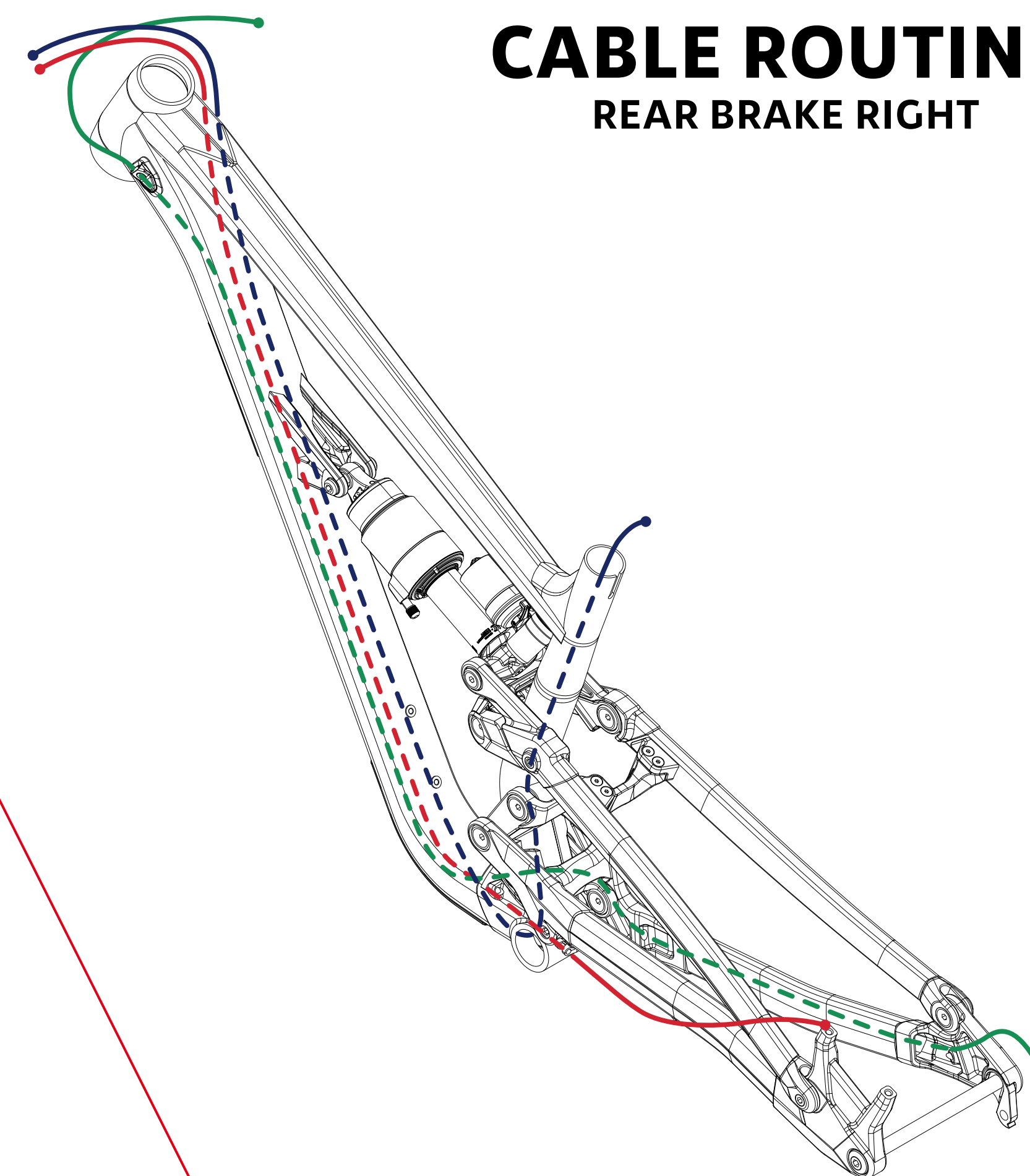
LEGEND

-  RD Cable
-  Rear Brake Hose
-  Dropper Post Cable



CABLE ROUTING

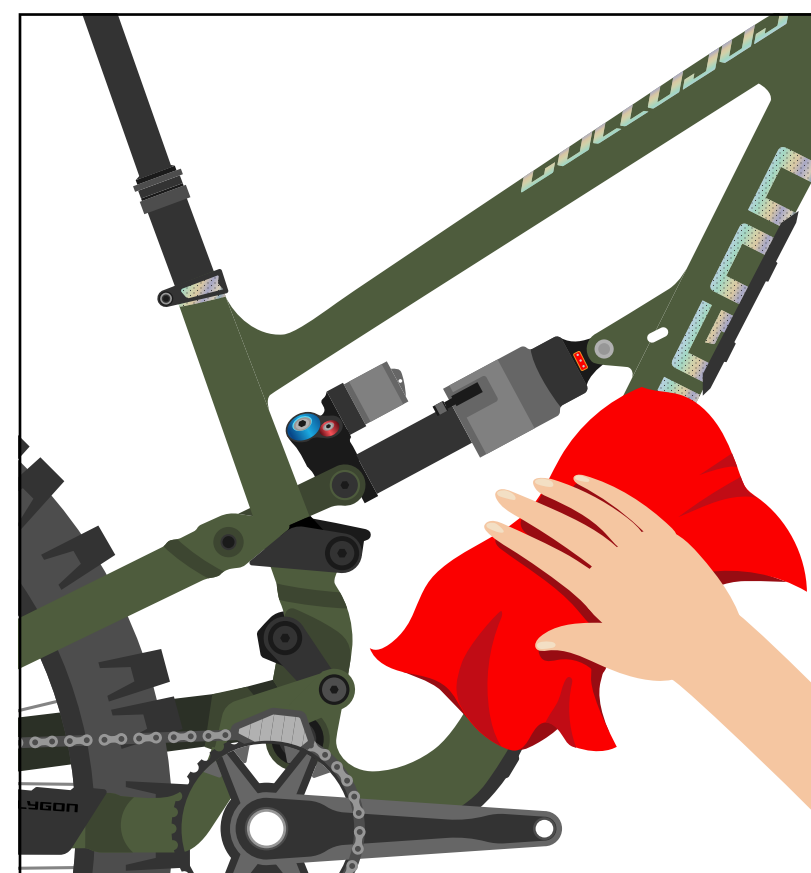
REAR BRAKE RIGHT



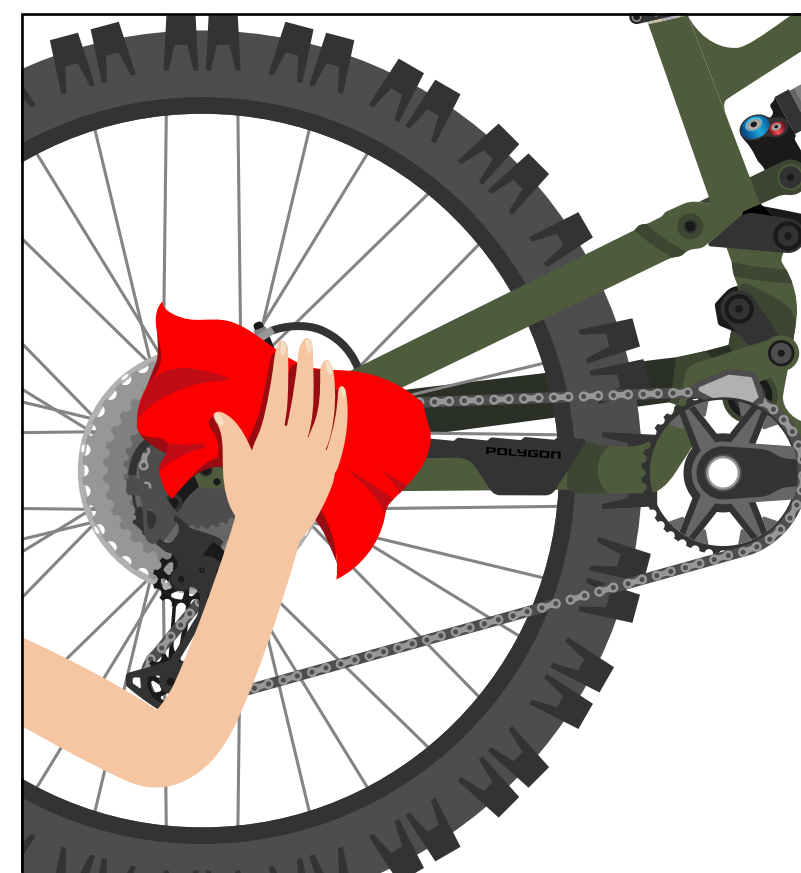
HOW TO CLEAN THE BIKE


1

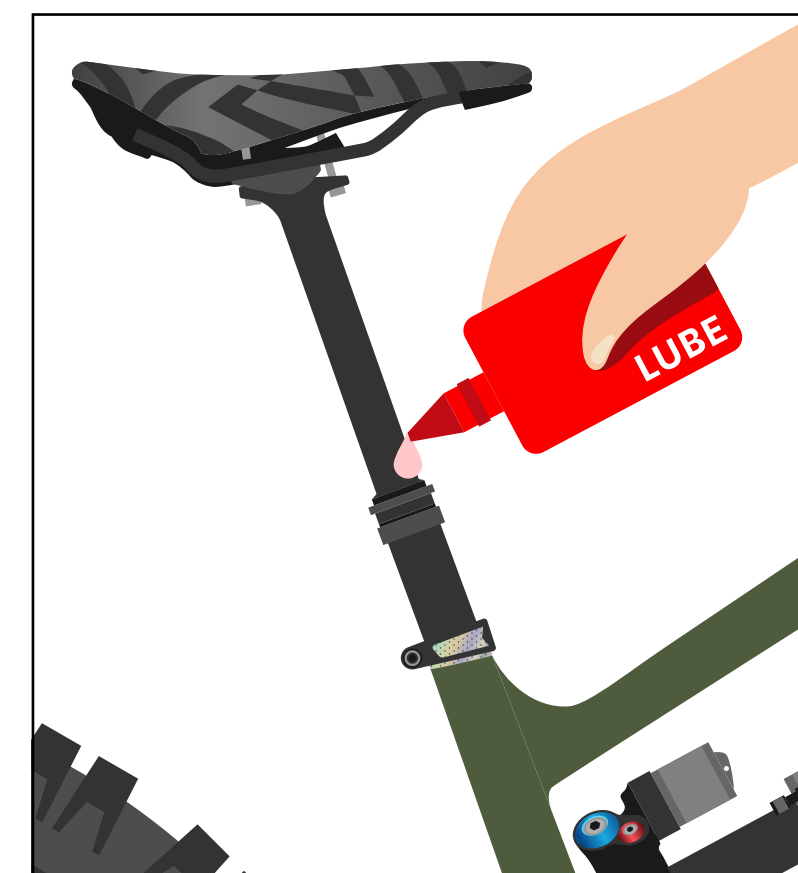
Use a bike wash or wet cloth to clean up every part of your bike. Preferably using a specific cleaner for the bike.


2

Wipe the bike immediately until it's dry. Do not leave it in wet conditions for a long time.


3

Clean up the drivetrain with a clean and dry cloth.

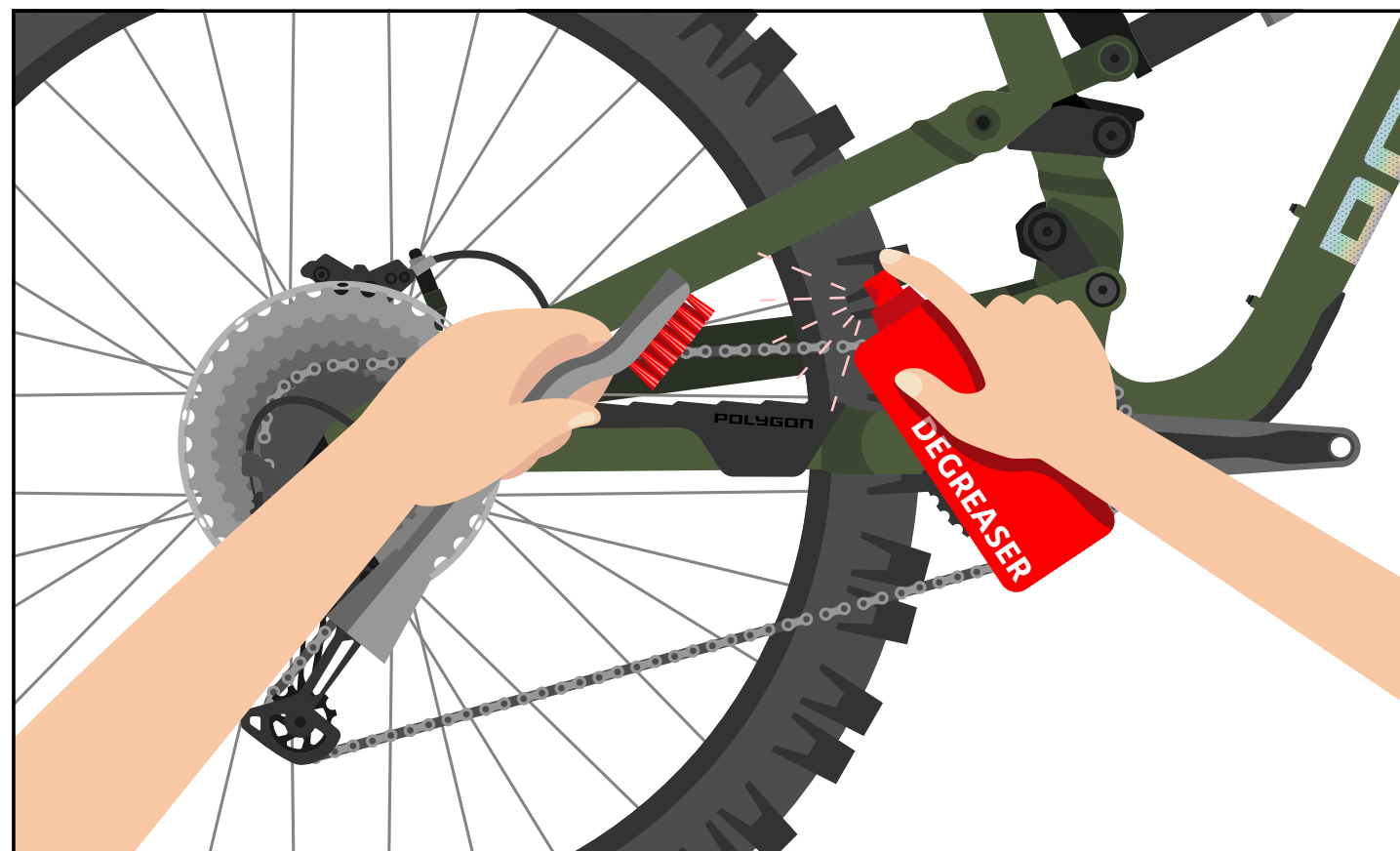

4

Check and lubricate every component if needed, especially 2 or more components that rub against each other, such as the seat post, bottom bracket, hub, pivot frame suspension, etc.

NOTE

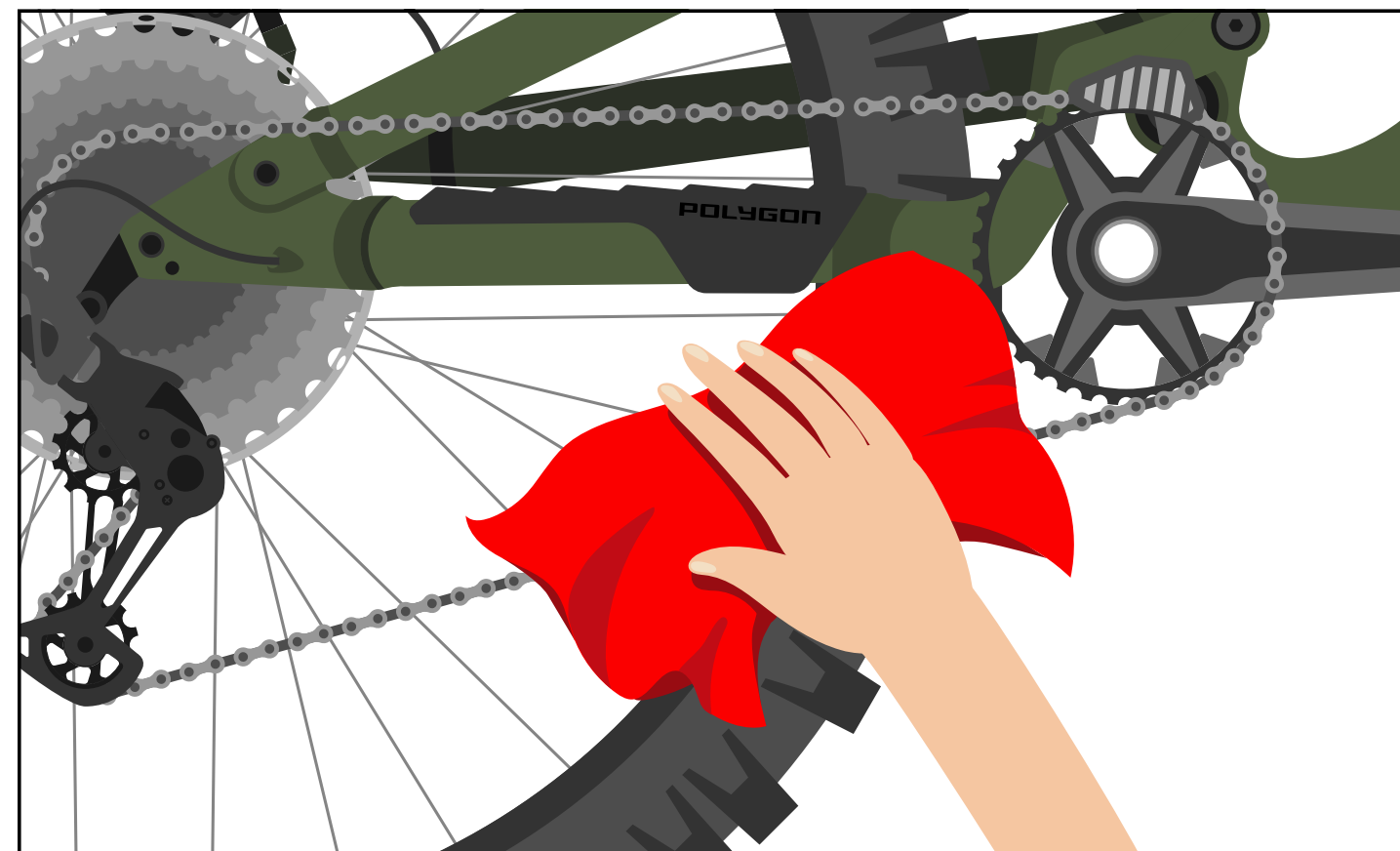
- Use the right bike wash to make sure your every bike component and frame is safe.
- Avoid washing the bike using high-pressure water.
- It is highly recommended to use specific lubricants for bicycle parts, not with engine vehicles or other oil since it might lead to component performance reduction.
- It is recommended to use a bike cleaner rather than detergent, solvent like acetone, and thinner to clean the bike parts.

HOW TO MAINTAIN THE BIKE'S CHAIN



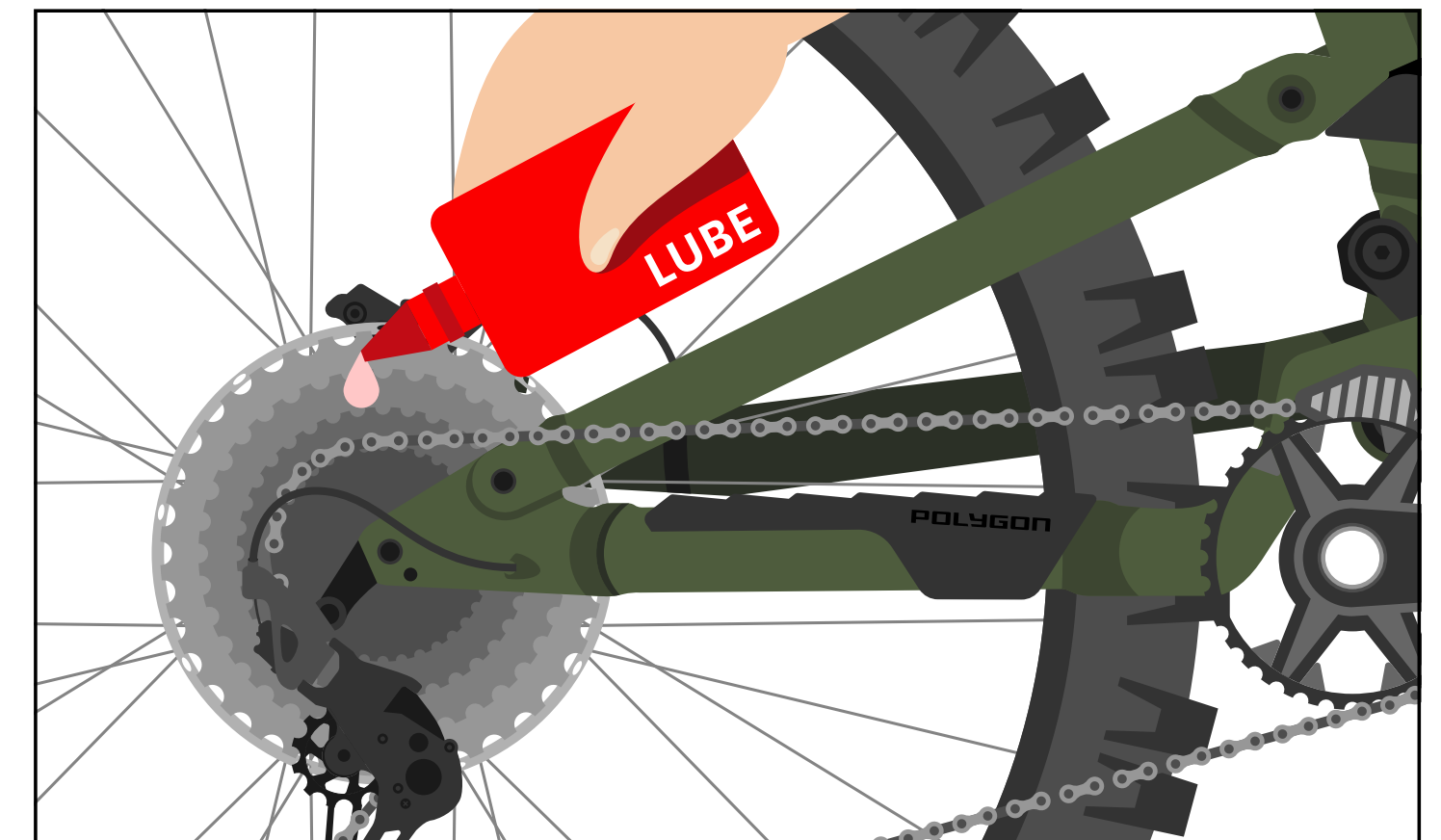
1

Use a bike chain cleaner and gently brush it.



2

Wipe with a clean and dry cloth, and let it dry for minutes.



3

Lube the chain regularly.